

40+ MILLION
SAFE & HAPPY FAMILIES
WORLD WIDE



LPG
ACCESSORIES

ADAPTERS

VALVES

FITTINGS

HOSES

IGT SAFETY ACCESSORIES FOR **LPG GAS APPLIANCES**

Caravan, Boat and Leisure housing
as well as professional installations



CONTENT

01 ABOUT US

02 SALES NETWORK

03 CATALOGUE OVERVIEW (A - NV)

04 NOTES

ABOUT US



Welcome to Integrated Gas Technologies

IGT is one of the Global leaders in the market for regulators and hoses for butane and propane cylinders.

IGT Headquartered in Denmark has two factories, NBSX located in Ningbo, China since 2004 and IGCT located in Hyderabad, India since 2016. IGT employs 245 people.

IGT uses the best raw materials such as zamac3, brass, steel and rubber for all components. In addition, we perform 100% quality control on both assembly and assembled finished products.

All LPG regulators come with a 5 year product warranty and \$ 5 million product liability insurance.

The factories have been audited and approved among others by international gas appliance companies and meet the high standards of these customer segments. Both factories are ISO9001 certified and in 2014 the NBSX factory was also BSCI certified (www.bsci-int.org), a social enterprise initiative aimed at ensuring compliance with the European Code of Conduct on Social Responsibility.

IGT aligns its production with the 17 United Nations Sustainable Development Goals to achieve a better and more sustainable future for all of us.



IGT WORLD WIDE SALES NETWORK OVER 110 COUNTRIES



IGT is a global supplier of domestic LPG Safety Device, with sales in over 110 countries.

IGT has a worldwide distribution sales network with its own sales staff in Europe, United States, Russia-SNG countries, China and India.

See complete distributor and dealer list on WWW.IGT-LPG.COM

- 📍 **Headquarters: Denmark**
- 📍 **Factory: Ningbo China, Hyderabad India**
- 📍 **Sales Office: Russia, USA, Kenya**

IGT EU GAS FITTINGS, VALVES & HOSES

- Applications: Gas appliances, Caravan, Boat and Leisure housing as well as professional installations
- In the EU there are over 50 different gas cylinder valve connections, gas pressures and outlet sizes-hoses etc.
- IGT is committed in to assisting by this catalogue to make a clear overview of the combined solutions available to the market.

A GAS CYLINDER ADAPTORS

B HOSE ADAPTORS

C HOSE EXTENSION PIECES

D PIPE TO HOSE ADAPTORS

E HOSE NOZZLES - TWO PIECE METAL CONICAL CONNECTION

F GAS FILTERS

H SIZE REDUCTION ADATOR

I POL ADAPTORS

J PLUGS

K NUT AND NIPLE PARTS

L SLEEVES AND CLAMPS

M COMPRESSION FITTINGS EN8434

N TOOLS

P PIPE -PIPE EXTENSIONS FITTINGS

Q QUICK COUPLINGS EN561

S SAFETY EXCESS FLOW VALVES

CH CHANGE OVER VALVES

BV BALL VALVES

NV NEEDLE VALVES

Notes:

G.xx Refers to Inner or Outer Thread according to ISO228-1

G.1 Threaded connection W20 x 1,814 L.H,

G.2 Threaded connection W21,8 x 1,814 LH 60°

G.3 Threaded connection M16 x 1,5 R.H.

G.4 Thread connection W21,8 x 1,814 L.H - 55°

G.5 Thread connection W21,8 x 1,814 L.H - 55°

G.6 Thread connection W22 x 1,155 L.H.

G.7 Thread connection 5/8 L.H. -POL

G.8 Thread connection W21,8 x 1,814 - L.H.

G.9 Thread connection 0,880 NGO L.H. - US POL

G.10 Threaded connection 0,880 NGO L.H. - Rubber Nose - US POL

G.12 Threaded connection W21,8 x 1,814.LH 55

- Compression Fittings Supplied are made to EN8434.
Unless specifically stated.
G1/4" LH and G3/8" LH threads and made to EN560

GAS CYLINDER ADAPTORS

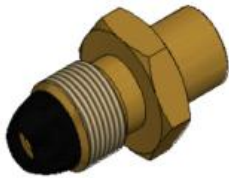
A



		Factory		IGT DK
A	B	Material	Item No.	Item No.
M14x1,5	M16x1,5 female	Brass	QJCP000039	A900-258



		Factory		IGT DK
A	B	Material	Item No.	Item No.
G10 male	G2 male	Brass	QJCP000039	A900-090



		Factory		IGT DK
A	B	Material	Item No.	Item No.
G10 male	M16x1,5 female	Brass	QJCP000163	A900-089



		Factory		IGT DK
A	B	Material	Item No.	Item No.
G10 male	G12 male	Brass		A900-048



		Factory		IGT DK
A	B	Material	Item No.	Item No.
G10 male	M14x1,5 90 degree angled	Brass		A900-078



		Factory		IGT DK
A	B	Material	Item No.	Item No.
G10 male	G3/8" LH male	Brass		A900-259



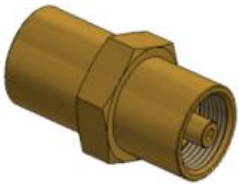
		Factory		IGT DK
A	B	Material	Item No.	Item No.
M16-G12 male adaptor	G12 male	Brass		A900-108
M16X1,5	7/16"	Brass		A900-017
3/8" LH male	7/16"	Brass		A900-199



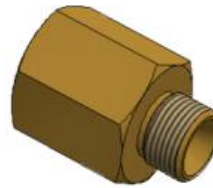
		Factory		IGT DK
A	B	Material	Item No.	Item No.
G10 female	G2 female	Brass	QJCP000094	A900-107
G5/8 female	G2 female	Brass	QJCP000040	A900-091

GAS CYLINDER ADAPTORS

A



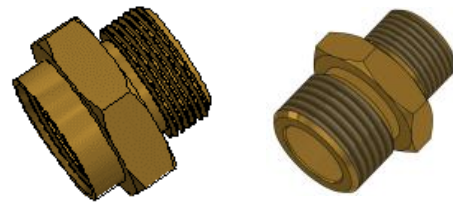
A	B	Material	Factory Item No.	IGT DK Item No.
G10 female	G12 female	Brass	QJCP000162	A900-111
G5 female	G12 male adapter	Brass		A900-337
G10 female	G3/8" LH male	Brass		A900-260



A	B	Material	Factory Item No.	IGT DK Item No.
G1/4" female	G1/4" male	Brass		A900-034



A	B	Material	Factory Item No.	IGT DK Item No.
G12 male	G2 female	Brass	QJCP000041	A900-092
G1 male	G2 female	Brass	QJCP000050	A900-097
G2 male	G12 female	Brass	QJCP000043	A900-094
G8 male	G2 female	Brass	QJCP000045	A900-096



A	B	Material	Factory Item No.	IGT DK Item No.
G2 male	G1 female	Brass	QJCP000044	A900-095
G3/8" RH	G1/2" RH BSP	Brass		A900-052
M 16X1,5	8 mm Nozzle	Brass		A900-035



A	B	Material	Factory Item No.	IGT DK Item No.
G5 female	W21.8 x 1.814 LH male	Brass	QJCP000154	A900-158
G2 R5	W21.8 x 1.814 LH male	Brass		A900-335



A	B	Material	Factory Item No.	IGT DK Item No.
G5 female	1/4" NPT male	Brass	QJCP000155	A900-159

- GAS Cylinder Adaptors are used to bridge the Various hose and regulator combination to the various gas cylinder valve outlets.
- For Quick connecting click-on and compact valve adaptors check out our LPG regulator catalogue. (C235is & C100)
- IGT Cylinder Adapter set D700 contains 12 adaptors enabling a Caravan/Boat user to connect to any gas cylinder in Europe

HOSE ADAPTORS

B



Description	Material	Factory	IGT DK
		Item No.	Item No.
G3/8" LH female to G3/8" LH male Swivel angled 45 degree	Brass		A900-043



Description	Material	Factory	IGT DK
		Item No.	Item No.
G1/4" LH male angled 90 degree to G1/4" LH female brass	Brass	QJCP000137	A900-141



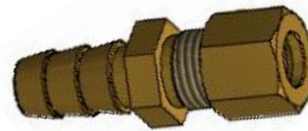
Description	Material	Factory	IGT DK
		Item No.	Item No.
8mm nozzle angled 90 degree to G1/4" LH female brass	Brass	QJCP000159	A900-163



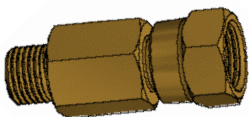
Description	Material	Factory	IGT DK
		Item No.	Item No.
5/8" UNF female to 8mm nozzle Brass	Brass	QJCP000183	A900-213



Description	Material	Factory	IGT DK
		Item No.	Item No.
G1/4 LH 90° to 6.3mm	Brass	QJCP000207	A900-168



Description	Material	Factory	IGT DK
		Item No.	Item No.
G3/8" Compression to 10mm nozzle Brass	Brass	QJCP000126	A900-130
10mm compression to 10mm nozzle	Brass	QJCP000133	A900-137

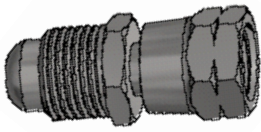


Description	Material	Factory	IGT DK
		Item No.	Item No.
5/8" UNF female to G1/4 LH male long body	Brass	QJCP000232	A900-244

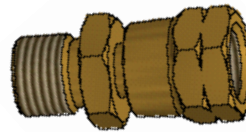


Description	Material	Factory	IGT DK
		Item No.	Item No.
G2 female to 10 mm nozzle 90° angle	Brass		A900-329
G12 female to G12 male 90° angle	Brass		A900-344

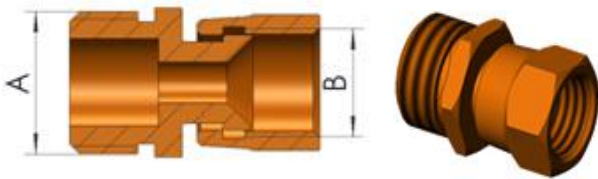
- G3/8" LH connections are used with high pressure gas equipment
- G1/4" LH connections are used with low pressure gas equipment



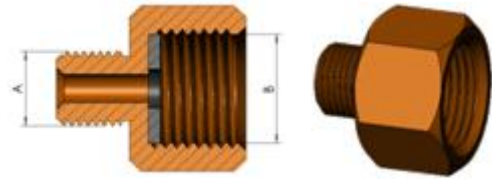
Description	Material	Factory	IGT DK
		Item No.	Item No.
5/8" UNF male to G1/4 LH female	Steel	QJCP000099	A900-106
5/8" UNF-18 male G 1/4"-LH nut	Brass	QJCP000098	A900-201



Description	Material	Factory	IGT DK
		Item No.	Item No.
G1/4 LH male to G1/4 RH female	Brass	QJCP000160	A900-039



Description	Material	Factory	IGT DK
		Item No.	Item No.
G1/2" BSP male to 5/8" UNF female	Brass	QJCP000023	A900-110
G1/2" BSP male to G1/4" LH	Brass	QJCP000042	A900-093
G1/2" BSP male to G1/4" LH	Steel	QJCP000055	A900-105
G1/4" LH to 5/8" UNF female	Steel	QJCP000164	A900-165



Description	Material	Factory	IGT DK
		Item No.	Item No.
G1/4" male to G1/2" female	Brass	QJCP000068	A900-103
G1/4" male to 5/8" UNF female	Brass	QJCP000096	A900-209
G1/4" male to G2 female	Brass	QJCP000095	A900-197

- Hose adaptors are used to bridge between different thread sizes and between US and EN standards.
- They also allow angled connections where narrow space is a challenge or if you want to connect to a steel or copper pipe.

HOSE EXTENSION PIECES

C



Description	Material	Factory	IGT DK
		Item No.	Item No.
6.3mm Hose Nozzle both ends	Brass		A900-156



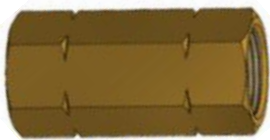
Description	Material	Factory	IGT DK
		Item No.	Item No.
8mm Hose Nozzle both ends	Brass	QJCP00027	A900-160



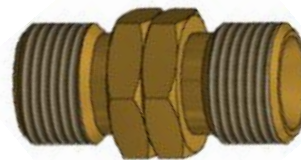
Description	Material	Factory	IGT DK
		Item No.	Item No.
10mm Hose Nozzle both ends	Brass	QJCP000159	A900-157



Description	Material	Factory	IGT DK
		Item No.	Item No.
G1/4" LH Nut to G1/4" LH male both sides	Steel	QJCP0001082	A900-082



Description	Material	Factory	IGT DK
		Item No.	Item No.
Double 2POL G10 female	Brass	QJCP000207	A900-121



Description	Material	Factory	IGT DK
		Item No.	Item No.
G3/8" LH male both ends	Brass	QJCP000123	A900-123

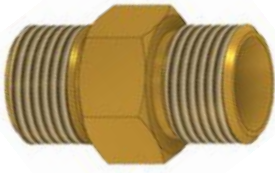


Description	Material	Factory	IGT DK
		Item No.	Item No.
G1/4" LH male both ends	Brass	QJCP000133	A900-176

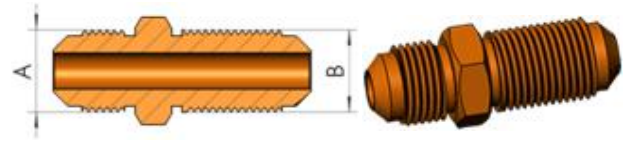


Description	Material	Factory	IGT DK
		Item No.	Item No.
G1/4" LH male to G3/8" LH male	Brass	QJCP000248	A900-044

HOSE EXTENSION PIECES



Description	Material	Factory	IGT DK
		Item No.	Item No.
G3/4" LH male both ends	Brass	QJCP000232	A900-177



Description	Material	Factory	IGT DK
		Item No.	Item No.
5/8" UNF-5/8" UNF	Brass	Qj00000088	A900-202



Description	Material	Factory	IGT DK
		Item No.	Item No.
ID 8 mm hose nozzle	Brass	QJCP000049	A900-100
ID 10 mm hose nozzle	Brass	QJCP000114	A900-049
ID 11 mm hose nozzle	Brass	QJCP000115	A900-045



Description	Material	Factory	IGT DK
		Item No.	Item No.
ID 6.3 mm hose nozzle	Brass	FST0000001	A900-036
ID 8 mm hose nozzle	Brass	QJCP000174	A900-047
ID 10 mm hose nozzle	Brass	QJCP000182	A900-046
G1/4" LH male to 1/4" LH male	Brass		A900-346
G1/4" LH male 3 ways	Brass		A900-347



Description	Material	Factory	IGT DK
		Item No.	Item No.
G3/8" RH male to G3/8" LH female	Brass		A900-018

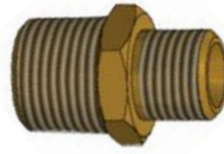
- Hose extension pieces allow you to extend or add additional hose length to your installation.
- Note. For hose length exceeding 1.5M, local government regulations may be applicable. A Long hose contains a lot of Gas. Gas safety must be considered - volume - bending - gas leak risk - pressure drop - re-condensation - excess pressure build up etc to mention the most common issues.

PIPE TO HOSE ADAPTERS

D



Description	Material	Factory	IGT DK
		Item No.	Item No.
Adapter G3/8"RH male to 3/8"NPT	Brass	QJCP000134	A900-138



Description	Material	Factory	IGT DK
		Item No.	Item No.
3/8" NPT male to G1/4" LH male	Brass	QJCP000073	A900-112



Description	Material	Factory	IGT DK
		Item No.	Item No.
8 mm nozzle -R1/4" male ISO 7/1	Brass	QJCP000129	A900-133
8mm nozzle R1/2" male ISO7/1	Brass	QJCP000127	A900-131
8mm nozzle R3/8" male ISO 7/1	Brass	QJCP000128	A900-132



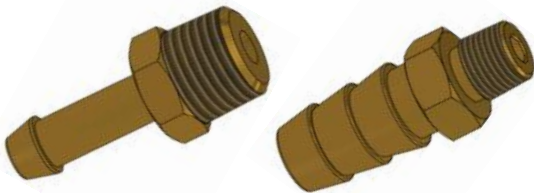
Description	Material	Factory	IGT DK
		Item No.	Item No.
11 mm nozzle -M14*1.5 male EN8434	Brass	QJCP000185	A900-214
11 mm nozzle - M16*1.5 male EN8434	Brass	QJCP000186	A900-215



Description	Material	Factory	IGT DK
		Item No.	Item No.
11 mm nozzle - G1/4RH female	Brass	QJCP000187	A900-216



Description	Material	Factory	IGT DK
		Item No.	Item No.
R1/4" to 10mm nozzle	Brass	QJCP000205	A900-233

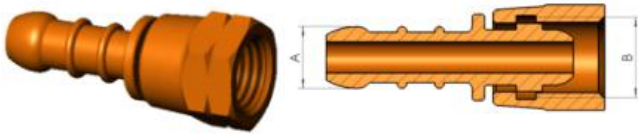


Description	Material	Factory	IGT DK
		Item No.	Item No.
R1/4" - 6.3mm nozzle male ISO 7/1	Brass		A900-322
R1/8" - 10mm hose nozzle male ISO 7/1	Brass		A900-324

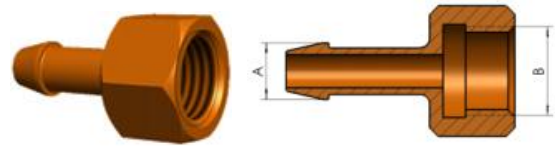


Description	Material	Factory	IGT DK
		Item No.	Item No.
G3/8" to BSP 10mm nozzle	Brass	QJCP000206	A900-234
3/8"NPT to 10mm nozzle	Brass	QJCP000007	A900-054
1/2"NPT to 10mm nozzle	Brass	QJCP000008	A900-055

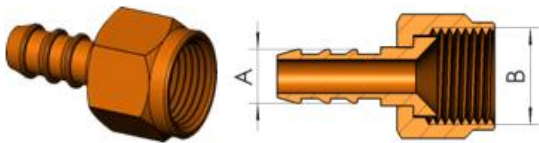
- The pipe to hose adapter allows you to bridge the connection between a steel pipe and a gas hose.



Description	Material	Factory	IGT DK
		Item No.	Item No.
ID 6,3 mm hose nozzle G 1/4"-LH nut	Brass	QJCP000096	A900-113
ID 8 mm hose nozzle G 1/4"-LH nut	Steel	QJCP000018	A900-073
ID 8 mm hose nozzle G 1/4"-LH nut	Brass	QJCP000184	A900-074
ID 9 mm hose nozzle G 1/4"-LH nut	Steel	QJCP000059	A900-109
ID 10 mm hose nozzle G 1/4"-LH nut	Steel	QJCP000019	A900-084
ID 11 mm hose nozzle G 1/4"-LH nut	Brass	QJCP000010	A900-060



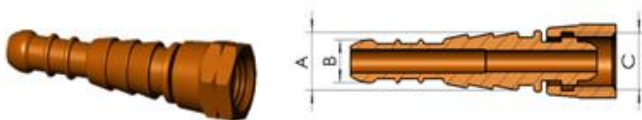
Description	Material	Factory	IGT DK
		Item No.	Item No.
ID 8 mm hose nozzle G2	Brass	QJCP000105	A900-198
ID 8,0 mm hose nozzle M20x1,5	Brass	QJCP000106	A900-116
ID 10 mm hose nozzle M20x1,5 LH nut	Brass	QJCP000107	A900-117
ID 8 mm hose nozzle G1/2" RH	Brass	QJCP000108	A900-088
ID 10 mm hose nozzle G1/2" RH	Brass	QJCP000109	A900-087
ID 8- 11 mm hose nozzle G3/8" RH	Brass	QJCP000110	A900-076
R1/8" - 6.3mm hose nozzle female ISO 7/1	Brass		A900-323



Description	Material	Factory	IGT DK
		Item No.	Item No.
ID 6,3 mm hose nozzle 5/8" UNF nut	Steel , Galvanization	QJCP000111	A900-118
ID 8 mm hose nozzle 5/8" UNF nut	Brass	QJCP000112	A900-200
ID 10 mm hose nozzle 5/8" UNF nut	Brass	QJCP000113	A900-193
ID 10 mm hose nozzle 5/8" UNF nut - Norwegian	Brass		A900-099



Description	Material	Factory	IGT DK
		Item No.	Item No.
ID 6,3mm hose nozzle G 3/8"-LH nut	Steel , Galvanization	QJCP000100	A900-114
ID 8 mm hose nozzle G 3/8"-LH nut	Brass	QJCP000101	A900-115
ID 9 mm hose nozzle G 3/8"-LH nut	Brass	QJCP000102	A900-196
ID 10 mm hose nozzle G 3/8"-LH nut	Brass	QJCP000104	A900-075
3/8"-LH - 6,3 mm nozzle swivel for torch handle 3488	Brass		A900-261
ID 8-11 mm hose nozzle G1/4" LH - Plastic wheel	Steel		A900-352



Description	Material	Factory	IGT DK
		Item No.	Item No.
ID 8-11 mm hose nozzle G1/4" LH nut	Steel, Galvanization	Qj00000028	A900-080
ID 8 -11mm hose nozzle 5/8" UNF -18	Brass	Qj00000091	A900-207
ID 8 -11mm hose nozzle G1/2" RH	Brass	QJCP000093	A900-083



Description	Material	Factory	IGT DK
		Item No.	Item No.
M20x1.5 female - 8 mm nozzle 2 piece	Brass	QJCP000161	A900-164
M20x1.5 female - 8 mm nozzle 1 piece	Brass		A900-170



Description	Material	Factory	IGT DK
		Item No.	Item No.
M20x1.5 female - 10 mm nozzle	Brass	QJCP000158	A900-162
M20x1.5 female - G1/4" LH male	Brass		A900-353



Description	Material	Factory	IGT DK
		Item No.	Item No.
"Sheriff star" G6 inlet - R1/4" RH	Brass		A900-181



Description	Material	Factory	IGT DK
		Item No.	Item No.
"Sheriff star" G6 inlet - 1/4" NPT with auto excess flow 4 L/min	Brass		A900-182
G2 - 1/4" NPT with auto excess flow 4 L/min	Brass		A900-328



Description	Material	Factory	IGT DK
		Item No.	Item No.
"Sheriff star" G6 inlet - 1/4" NPT with auto excess flow 8 l/min	Brass		A900-183



Description	Material	Factory	IGT DK
		Item No.	Item No.
"Sheriff star" G6 inlet - 6.3 mm nozzle	Brass		A900-180
"Sheriff star" G2 female - 6.3mm nozzle	Brass		A900-119

- Hoses used for Low pressure in the EU is typical 6.3 - 8 - 10mm ID.
For gas appliances use EN16436-1 For gas torches use ISO 3821 Hoses.
- EN16436-2 defines a hose assembly. Typically a hose with a fitting on both ends.
Attached by a compressed sleeve or a hose clamp. Note EN16436-2 has strict regulations on testing and marking of such products- as well as certifications in many markets i.e. DVGW.

GAS FILTER

DOUBLE CUP DESIGN

The upper cup contain the gas filter. Replacement of the gas filter requires a wrench and is recommended done by a professional gas fitter.

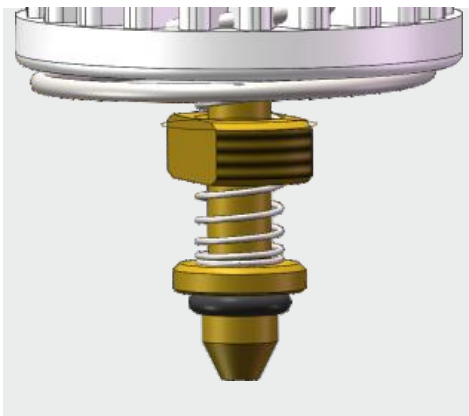
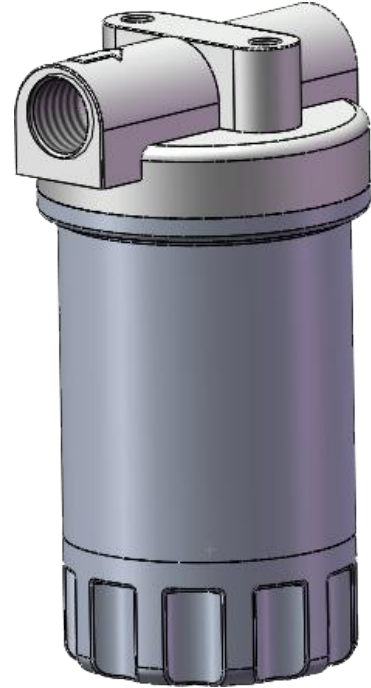
The lower cup contains the gas pad that absorb the heavy ends and dirt. This can be unscrewed by hand by end user and gas pad can be exchanged regularly.

The inbuilt check valve closes the High Pressure upper gas filter unit of from the lower cup when the lower part is being unscrewed.

This safeguard the enduser against unwanted release of high pressure gas from the gas hose and upper filter unit.

The check valve allows exchange of the gas pads by end user without first emptying the complete gas system.

The gas filter extend the life time of the changeover regulator and ensure a trouble free use.



Item No	Inlet	RVS 8 mm
A900-F001	RVS 8 mm	RVS 8 mm
A900-F002	RVS10 mm	RVS 10 mm
A900-F003	G1/4" Lh Male	G1/4" Lh Nut
A900-F004	M20x1,5 Male	M20x1,5 Nut
A900-F005	G5 Kombi	G12 KLF
A900-F999		Replacement filter
A900-F992		10 pcs gas pads

RVS 8 mm = 8 mm compression fitting to EN8434

RVS 10 mm = 10 mm compression fitting to En8434

Working pressure : 16 bar

Filter Unit : Absorb 99% of dirt and heavy ends

Gas pad in lower cup : Cotton pad that absorb the liquid residue and dirt.

- IGT gas filters 99,9 % of the aerosols from the gas and protects the LPG installation down stream. Filter unit can be exchanged – recommended every 2 years or whenever it is needed. Depending on the gas quality.

Technical data:

Gas type : LPG - Propane Butane Pressure : 0,3 -16 bar

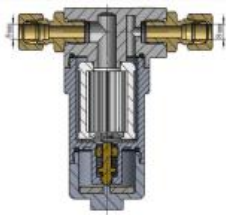
Filter inlet/ Outlet :

8 mm Compression fitting - 10 mm compression fitting

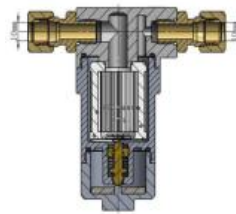
M20 x 1,5 W21,8-G12

Dimensions :

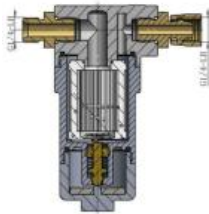
Compression fitting to EN1254. L x W x D 115 x 54 x 74 mm.



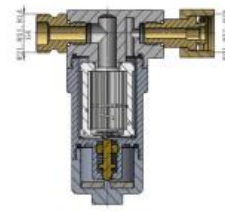
Description	Material	Factory	IGT DK
		Item No.	Item No.
8mm compression fitting both ends	Brass		A900-F007



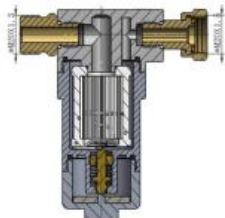
Description	Material	Factory	IGT DK
		Item No.	Item No.
10mm compression fitting both ends	Brass		A900-F008



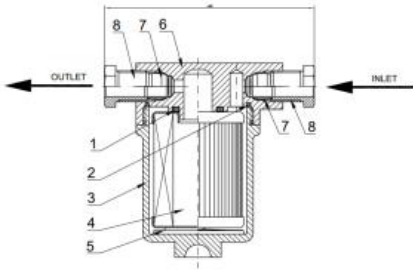
Description	Material	Factory	IGT DK
		Item No.	Item No.
G1.4LH female to G1.4LH male	Brass		A900-F009



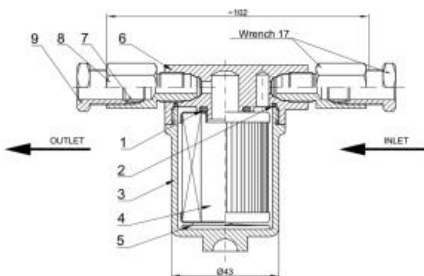
Description	Material	Factory	IGT DK
		Item No.	Item No.
G4 female to G4 male	Brass		A900-F010



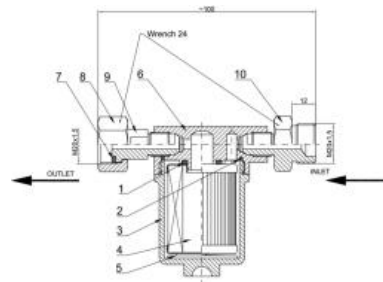
Description	Material	Factory	IGT DK
		Item No.	Item No.
M20x1.5 male to M20x1.5 female	Brass		A900-F011



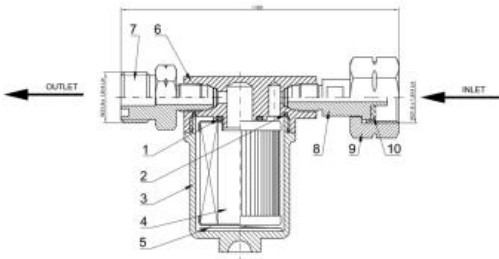
Description	Material	Factory	IGT DK
		Item No.	Item No.
8mm compression both ends	Zinc & Brass	QJCP000201	A900-F001



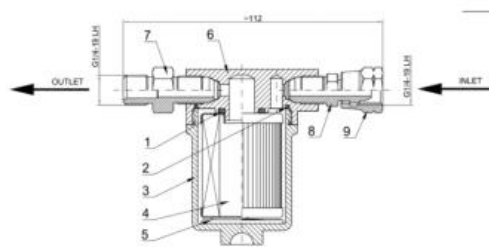
Description	Material	Factory	IGT DK
		Item No.	Item No.
10mm compression both ends	Zinc & Brass	QJCP000202	A900-F002



Description	Material	Factory	IGT DK
		Item No.	Item No.
M20x1.5 + M20x1.5	Zinc & Brass	QJCP000203	A900-F004



Description	Material	Factory	IGT DK
		Item No.	Item No.
W21.8*1.814 + W21.8*1.814	Zinc & Brass	QJCP000204	A900-F005



Description	Material	Factory	IGT DK
		Item No.	Item No.
G1/4-19LH / G1/4-19LH Filter	Zinc & Brass	QJCP000208	A900-F003



Description	Material	Factory	IGT DK
		Item No.	Item No.
Replacement filter unit	Steel Rubber		A900-F999.



Description	Material	Factory	IGT DK
		Item No.	Item No.
Bracket for wall	Steel		A900-F993

REDUCTION ADAPTORS

H



Description	Material	Factory	IGT DK
		Item No.	Item No.
G1/4" LH female to G3/8" LH male	Brass		A900-262
G3/8" LH female to G1/4" LH male	Brass		A900-033
5/8" UNF to 3/8" NPT-18	Brass		A900-061
5/8" UNF to 1/4" LH	Brass		A900-135



Description	Material	Factory	IGT DK
		Item No.	Item No.
G3/8" LH female to G1/4" LH male	Brass	QJCP000118	A900-122



Description	Material	Factory	IGT DK
		Item No.	Item No.
G1/2" RH to G3/8" RH	Brass	Y400LJ0056	A900-052
R1/4" male - G6 outlet with polyamide seal	Brass		A900-326

- Allow you to bridge from one thread size to another.

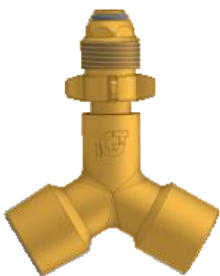
POL ADAPTORS



Description	Material	Factory	IGT DK
		Item No.	Item No.
POL CGA 510 (G10) male - 2x POL female out LONG = 123 mm	Brass		A900-185



Description	Material	Factory	IGT DK
		Item No.	Item No.
POL CGA 510 (G10) male - 2x POL female out Short = 47 mm	Brass		A900-184



Description	Material	Factory	IGT DK
		Item No.	Item No.
POL male to G7 female	Brass	QJCP000166	A900-167



Description	Material	Factory	IGT DK
		Item No.	Item No.
POL to G1/4" LH male	Brass	QJCP000120	A900-124

I

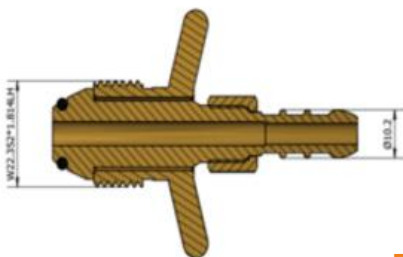
POL ADAPTORS G-10



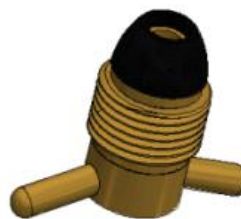
Description	Material	Factory	IGT DK
		Item No.	Item No.
POL 6,3-8 mm nozzle wing nut	Brass	QJCP000121	A900-125



Description	Material	Factory	IGT DK
		Item No.	Item No.
POL - 8 mm nozzle	Brass	QJCP000122	A900-126



Description	Material	Factory	IGT DK
		Item No.	Item No.
POL to 8mm nozzle	Brass	QJCP000242	A900-101



Description	Material	Factory	IGT DK
		Item No.	Item No.
POL female G1-4" BSP +G10	Brass	QJCP000123	A900-127

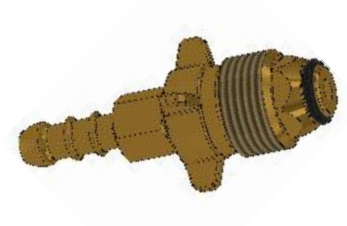


Description	Material	Factory	IGT DK
		Item No.	Item No.
POL to 8-6,3 mm nozzle with internal excess flow + G1/4 filter gasket	Brass	QJCP000125	A900-129
POL to G 1/4" LH Soft	Brass		A900-068
POL to G 1/4" LH Hard	Brass		A900-069
POL to G 12 male	Brass		A900-318



Description	Material	Factory	IGT DK
		Item No.	Item No.
POL Olive gasket	NBR		A300-999

POL ADAPTORS G-7 - 5/8"



Description	Material	Factory	IGT DK
		Item No.	Item No.
POL 5/8" - 8mm nozzle	Brass		A900-339

PLUGS



Description	Material	Factory	IGT DK
		Item No.	Item No.
Compression fitting plug 8 mm	Brass		A900-022
Compression fitting plug 8 mm	Brass		A900-254
Compression fitting plug 3/8"	Brass		A900-025



Description	Material	Factory	IGT DK
		Item No.	Item No.
Compression fitting plug 10 mm	Brass		A900-028
Compression fitting plug 10 mm	Brass		A900-255



Description	Material	Factory	IGT DK
		Item No.	Item No.
Cap for G3/8"			900-997
Cap for G1/4"			900-998



Description	Material	Factory	IGT DK
		Item No.	Item No.
POL plug G10	Brass	QJCP000124	A900-128



Description	Material	Factory	IGT DK
		Item No.	Item No.
Plug for M20x1,5 male			A900-019

NUT AND NIPPLE PARTS

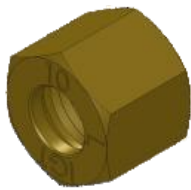
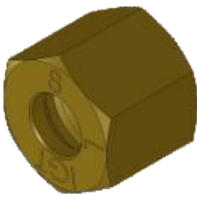
K



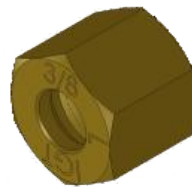
Description	Material	Factory	IGT DK
		Item No.	Item No.
Compression fitting cutting ring 8 mm	Steel		A900-291
Compression fitting cutting ring 3/8"	Steel		A900-294



Description	Material	Factory	IGT DK
		Item No.	Item No.
Compression fitting cutting ring 10 mm	Steel		A900-292

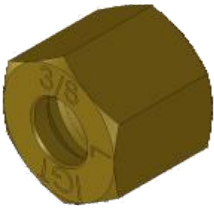


Description	Material	Factory	IGT DK
		Item No.	Item No.
Compression fitting nut 8 mm	Brass		A900-020
Compression fitting nut 10 mm	Brass		A900-026



Description	Material	Factory	IGT DK
		Item No.	Item No.
Compression fitting nut 8 mm	Steel		A900-289
Compression fitting nut 3/8"	Steel		A900-295
Compression fitting nut 10 mm	Steel		A900- 290

NUT AND NIPPLE PARTS



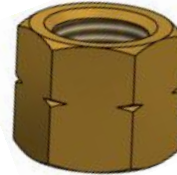
Description	Material	Factory	IGT DK
		Item No.	Item No.
Compression fitting nut G3/8"	Brass		A900-023
Compression fitting nut 8 mm	Brass		A900-041
Compression fitting nut 10 mm	Brass		A900-070



Description	Material	Factory	IGT DK
		Item No.	Item No.
Compression fitting cutting ring 8 mm	Brass		A900-021
Compression fitting cutting ring 10 mm	Brass		A900-027
Compression fitting cutting ring G3/8"	Brass		A900-024
Compression fitting cutting ring 8 mm	Brass		A900-042
Compression fitting cutting ring 10 mm	Brass		A900-071



Description	Material	Factory	IGT DK
		Item No.	Item No.
8 mm nipple for G1/4" LH nut	Brass	FXZ0000108	A900-037
6.3 mm nipple for G2 nut			A900-327



Description	Material	Factory	IGT DK
		Item No.	Item No.
Nut G1/4" LH	Brass	FLM0000025	A900-038
Nut G2	Brass		A900-325



Description	Material	Factory	IGT DK
		Item No.	Item No.
Compression fitting cutting ring 6mm EN 1254	Brass		A900-321

- Brass cutting ring + nut are used with copper tubing. Steel cutting ring + nut are used with steel tubing. Stainless Steel versions are available!
- Note: Always use brass sleeves inside copper tubing to avoid unwanted deformation of the copper pipe.

SLEEVES AND CLAMPS

L

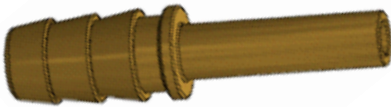


Description	Material	Factory	IGT DK
		Item No.	Item No.
Sleeve 3/8 "	Brass		A900-186
Sleeve 10 mm	Brass		A900-187
Sleeve 8 mm	Brass		A900-166
Sleeve 6 mm	Brass		A900-330

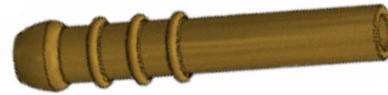
- The brass sleeves are placed inside the 8 or 10 or 3/8 mm copper tubing before it is connected to a compression fitting. When the compression nut is tightened the sleeve ensures the soft copper tubing is not deformed and a gas tight connection is established.

COMPRESSION FITTING ADAPTORS

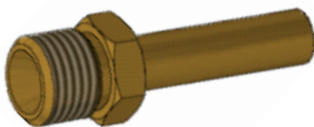
M



Description	Material	Factory	IGT DK
		Item No.	Item No.
10 mm nozzle - 8 mm tube	Brass	QJCP000132	A900-136
10 mm nozzle - 3/8"mm tube	Brass	QJCP000184	A900-212



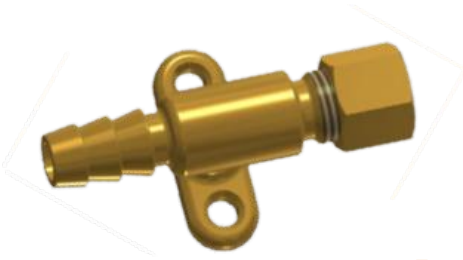
Description	Material	Factory	IGT DK
		Item No.	Item No.
8 mm nozzle - 8 mm tube	Brass	QJCP000130	A900-134
6.3 mm nozzle - 8 mm tube	Brass	QJCP000130	A900-203
8 mm nozzle - 3/8" tube	Brass	QJCP000130	A900-267



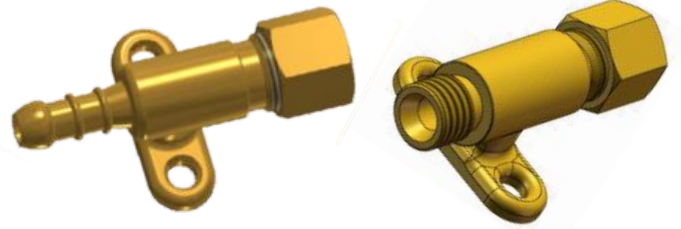
Description	Material	Factory	IGT DK
		Item No.	Item No.
G1/4" LH male to 8mm tube	Brass	QJCP000216	A900-222

COMPRESSION FITTING ADAPTORS

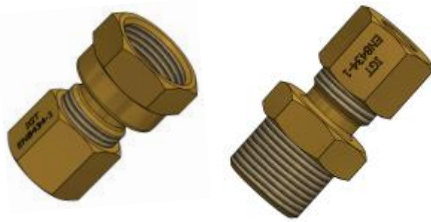
M



Description	Material	Factory	IGT DK
		Item No.	Item No.
10mm nozzle-8mm Compression fitting with wall bracket	Brass	QJCP000139	A900-143
10mm nozzle to 3/8" compression fitting	Brass	QJCP000167	A900-171



Description	Material	Factory	IGT DK
		Item No.	Item No.
8 mm nozzle-3/8" Compression fitting with wall bracket	Brass	QJCP000140	A900-144
8mm nozzle-8mm Compression fitting with wall bracket	Brass	QJCP000138	A900-142
G 1/4" LH - 8mm Compression fitting with wall Bracket	Brass		A900-319
10mm No nozzle - 3/8" Compression fitting with wall bracket	Brass		A900-334
10mm nozzle - 8 mm Compression fitting with wall bracket	Brass		A900-358



Description	Material	Factory	IGT DK
		Item No.	Item No.
compression fitting 10mm female M20 x 1.5	Brass		A900-011
compression fitting 10mm male M20 x 1.5	Brass		A900-012



Description	Material	Factory	IGT DK
		Item No.	Item No.
6,3 mm nozzle-10 mm compression fitting	Brass	QJCP000165	A900-205
8 mm nozzle-8 mm compression fitting	Brass	QJCP000136	A900-140
10mm No nozzle - 8mm Compression fitting	Brass		A900-320

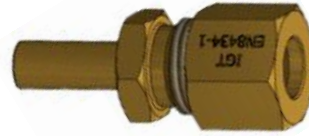


Description	Material	Factory	IGT DK
		Item No.	Item No.
10 mm nozzle-8 mm compression fitting	Brass	QJCP000135	A900-139

COMPRESSION FITTING ADAPTORS



Description	Material	Factory	IGT DK
		Item No.	Item No.
3/8" Compression fitting to 5/8" UNF male	Brass	QJCP000157	A900-161



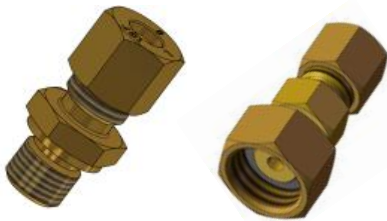
Description	Material	Factory	IGT DK
		Item No.	Item No.
10 mm Compression fitting - 8 mm tube	Brass		A900-204



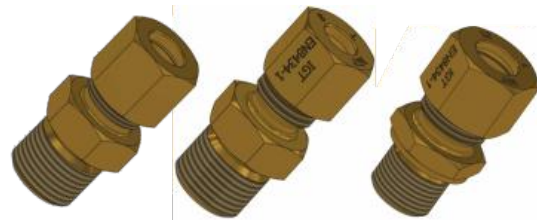
Description	Material	Factory	IGT DK
		Item No.	Item No.
3/8" Compression fitting to G1/2 RH male	Brass	QJCP000103	A900-102



Description	Material	Factory	IGT DK
		Item No.	Item No.
3/8" Compression fitting to G3/8 RH male Brass	Brass	QJCP000181	A900-098



Description	Material	Factory	IGT DK
		Item No.	Item No.
G1/4" - 19 RH - 8mm Compression fitting	Brass		A900-293
1/2" RH female - 8mm Compression fitting	Brass		A900-345



Description	Material	Factory	IGT DK
		Item No.	Item No.
3/8" LH 3/8" BSP Compression fitting	Brass		A900-363
8mm - 3/8" BSP	Brass		A900-364
10mm - 3/8" BSP	Brass		A900-365
12mm - 3/8" BSP	Brass		A900-366

- The compression fitting bridges the connection between the hose and pipe.
- Typically used for installation when you want to place the gas cylinder outside or in a ventilated compartment.
- In Europe such installations must comply with EN1949. DVGW ARBEITSBLATT G607. Explains well the installation procedures.

COMPRESSION FITTING ADAPTORS

M



Description	Material	Factory	IGT DK
		Item No.	Item No.
8mm compression fitting to G1/4LH male	Brass	QJCP000188	A900-217



Description	Material	Factory	IGT DK
		Item No.	Item No.
G1/4LH female to G3/8" Compression fitting	Brass	QJCP000213	A900-235



Description	Material	Factory	IGT DK
		Item No.	Item No.
G1/4 LH female to 8mm compression fitting	Brass	QJCP000214	A900-236



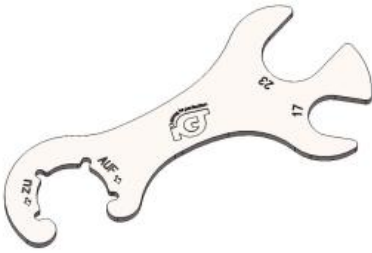
Description	Material	Factory	IGT DK
		Item No.	Item No.
G1/4LH female to 10mm compression fitting	Brass	QJCP000215	A900-237



Description	Material	Factory	IGT DK
		Item No.	Item No.
8 mm compression fitting Bulkhead - 8 mm nozzle	Brass		A900-081

COMPRESSION FITTING ADAPTORS

N



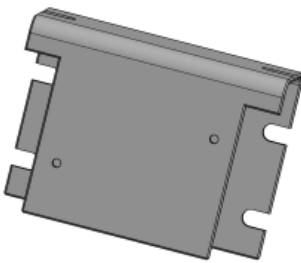
TOOLS

Description	Material	Factory Item No.	IGT DK Item No.
Spanner Germany	08F		A900-333



TOOLS

Description	Material	Factory Item No.	IGT DK Item No.
Spanner 17mm to 19mm	Steel	Y100BS0001	A900-001



Factory IGT DK

Description	Material	Item No.	Item No.
Steel bracket for change over valve	Brass		A900-356



Factory IGT DK

Description	Material	Item No.	Item No.
Protection cap 3/8"	Plastic		A900-997
Protection cap 1/4"	Plastic		A900-998



P

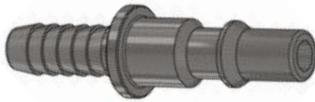
PIPE TO PIPE ADAPTORS

Description	Material	Factory Item No.	IGT DK Item No.
1/4"NPT to 1/4"NPT	Brass	QJCP000116	A900-120

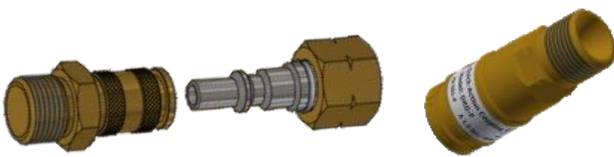
QUICK COUPLING - HIGH PRESSURE 16 BAR
EN561/ISO 7289 OR ISO6150C



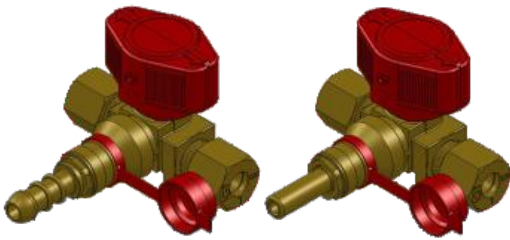
Description	Material	Factory	IGT DK
		Item No.	Item No.
Quick coupling with push button release 6.3mm hose nozzle both sides. PN 16bar	Steel		A900-299
Quick coupling with push button release 3/8" LH. PN 16bar	Steel		A900-313
Quick coupling with push button release G6 sheriff star. PN 16bar	Steel		A900-314
Quick coupling with push button release RC 1/4". PN 16bar	Steel		A900-315



Description	Material	Factory	IGT DK
		Item No.	Item No.
Male - 6.3mm	Steel		A900-300
Male - RC 1/4"	Steel		A900-316

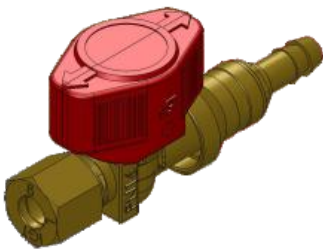


Description	Material	Factory	IGT DK
		Item No.	Item No.
G3/8" LH Quick Male PN 16 bar	Brass		A900-301
3/8" Male Quick Female	Steel		A900-310
3/8" Female Nut Quick male	Brass		A900-311
1/4" RC EN 561	Brass		A900-309



IGT DK

Description	Material	Item No.	Item No.
8mm compression to Quick Acting Valve 3 way 8mm tube	Brass		A900-240
8mm compression to Quick Acting Valve 3 way 8mm nozzle	Brass		A900-227
8mm compression to Quick Acting Valve 3 way 8mm nozzle No male part	Brass		A900-243

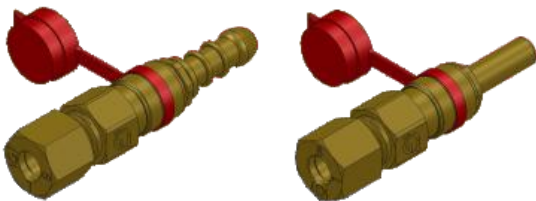


Need Image

A900-360

Factory IGT DK

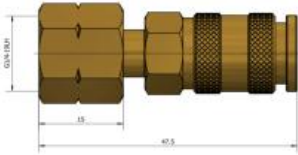
Description	Material	Item No.	Item No.
8mm compression to Quick Acting Valve - 8mm nozzle	Brass		A900-226
10mm compression to Quick Acting Valve - 10mm nozzle	Brass		A900-238
8mm compression to Quick Acting Valve - 8mm nozzle with wing for gas out take box	Brass		A900-360



IGT DK

Description	Material	Item No.	Item No.
8mm compression fitting to Quick Coupling - 8mm tube	Brass		A900-239
8mm compression fitting to Quick Coupling - 8mm nozzle	Brass		A900-225

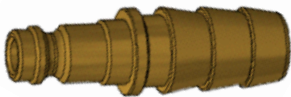
QUICK COUPLING MALE



Description	Material	Factory	IGT DK
		Item No.	Item No.
G1/4LH female to G1/4LH male Quick connector	Brass	QJCP000309	A900-264
G1/4" LH to Quick Female	Brass		A900-247



Description	Material	Factory	IGT DK
		Item No.	Item No.
G3/8" LH female - Quick coupling	Brass		A900-241
G1/4" LH male - 3/8" tube	Brass		A900-266
G1/4" LH to Quick Male	Brass		A900-248



Description	Material	Factory	IGT DK
		Item No.	Item No.
10mm hose nozzle to quick connector male	Brass		A900-246
8mm hose nozzle to quick connector male	Brass		A900-297
8mm tube to quick connector male	Brass		A900-298



Description	Material	Factory	IGT DK
		Item No.	Item No.
Quick release coupling female to 6.3mm nozzle	Brass		A900-343
Quick release coupling female to 8mm nozzle	Brass		A900-355



Need high resolution image

Description	Material	Factory	IGT DK
		Item No.	Item No.
Quick release coupling male to 1/4" LH angled 45°	Brass		A900-361
Quick coupling male to 8mm nozzle angled 45°	Brass		A900-307



Description	Material	Factory	IGT DK
		Item No.	Item No.
Quick release coupling to 7/16" male	Brass		A900-342

QUICK COUPLING



Description	Material	Factory	IGT DK
		Item No.	Item No.
G1/4" LH male to 8mm nozzle female quick coupling	Brass		A900-218



Description	Material	Factory	IGT DK
		Item No.	Item No.
G1/4" LH with male to 10mm nozzle female quick coupling	Brass		A900-245



Description	Material	Factory	IGT DK
		Item No.	Item No.
G1/4" LH male to 6.3mm female quick coupling	Brass		A900-219



Description	Material	Factory	IGT DK
		Item No.	Item No.
Compression fitting nut 8 mm	Brass		A900-223



Description	Material	Factory	IGT DK
		Item No.	Item No.
8-8mm nozzle quick coupling	Brass		A900- 224
10-10mm nozzle quick coupling	Brass		A900- 040



Description	Material	Factory	IGT DK
		Item No.	Item No.
8-10mm nozzle quick coupling	Brass		A900-340



Description	Material	Factory	IGT DK
		Item No.	Item No.
G1/4" LH nut male to 10mm nozzle female quick coupling	Brass		A900-256
G1/4" LH male to 8mm nozzle female quick coupling	Brass		A900-257

VALVE (HP EXCESS FLOW VALVES)



A	B	Pressure range	Gas type	Material	Flow rate	Factory Item No.	IGT DK Item No.
G3/8"-LH nut	G3/8"-male	1.5-4 bar	LPG	Zinc	6-8.5kg/h	A910ZJ3001	A910-003



A	B	Pressure range	Gas type	Flow rate	Factory Item No.	IGT DK Item No.
G1 female	G3/8-19LH male	0-16bar	LPG	4kg/h		A910-004



A	B	Pressure range	Gas type	Flow rate	Factory Item No.	IGT DK Item No.
G2 female	G3/8-19LH male	0-16bar	LPG	4kg/h		A910-005



A	B	Pressure range	Gas type	Flow rate	Factory Item No.	IGT DK Item No.
G5 female	G3/8-19LH male	0-16bar	LPG	4kg/h		A910-006



A	B	Pressure range	Gas type	Flow rate	Factory Item No.	IGT DK Item No.
G4 female	G3/8-19LH male	0-16bar	LPG	4kg/h		A910-011

VALVE (HP EXCESS FLOW VALVES)



A	B	Pressure range	Gas type	Flow rate	Factory Item No.	IGT DK Item No.
G7 male	G3/8-19LH male	0-16bar	LPG	4kg/h		A910-007



A	B	Pressure range	Gas type	Flow rate	Factory Item No.	IGT DK Item No.
G8 female	G3/8-19LH male	0-16bar	LPG	4kg/h		A910-008



A	B	Pressure range	Gas type	Flow rate	Factory Item No.	IGT DK Item No.
G10 male	G3/8-19LH male	0-16bar	LPG	4kg/h		A910-009



A	B	Pressure range	Gas type	Flow rate	Factory Item No.	IGT DK Item No.
G12 female	G3/8-19LH male	0-16bar	LPG	4kg/h		A910-010

- HP EXV are used directly after the gas cylinder valve.
Or connected to the outlet of an HP regulator

GAS LEAK TESTER

- The gas leak tester is used for mobile homes, leisure housing, caravan and boats where you have a combination of LPG hose and 2-15 meters of copper piping ending with a hose connecting to a gas appliance.
- The leak tester monitors the gas tightness- a push on the red knob reveals any gas leaks down stream of the detector.



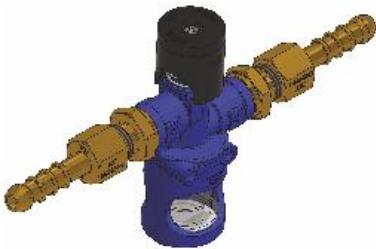
Connections	Material	Factory Item No.	IGT DK Item No.
Glykol refill			A900-010



Connections	Material	Factory Item No.	IGT DK Item No.
8 mm compression	Zinc & Brass		A900-002



Connections	Material	Factory Item No.	IGT DK Item No.
10 mm compression	Zinc & Brass		A900-004



Connections	Material	Factory Item No.	IGT DK Item No.
8 mm hose nozzle	Zinc & Brass		A900-005



Connections	Material	Factory Item No.	IGT DK Item No.
10 mm hose nozzle	Zinc & Brass		A900-006



Connections	Material	Factory Item No.	IGT DK Item No.
3/8" compression 8mm	Zinc & Brass	QJCP000330	A900-007



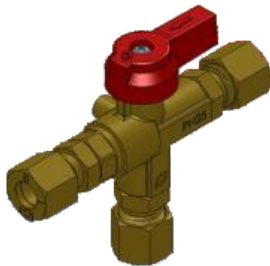
Connections	Material	Factory Item No.	IGT DK Item No.
8mm In - 10mm Out	Zinc & Brass		A900-228



- Manual change over valves are used to service one gas cylinder while the other cylinder is stand by.
- More cylinders on each side of the valve can be connected by the use of a manifold.

IGT DK

A	B	Gas type	Working Pressure	Item No.
7/16" BSP	1/4" NPT	LPG	20 bar	A900-V009



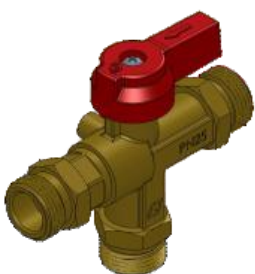
IGT DK

A	B	Gas type	Working Pressure	Item No.
8 mm compression fitting	8 mm compression fitting	LPG	25 bar	A900-V004



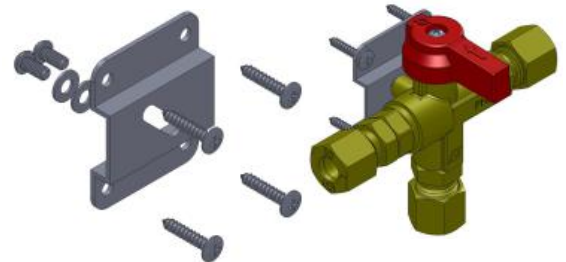
IGT DK

A	B	Gas type	Working Pressure	Item No.
10 mm compression fitting	10 mm compression fitting	LPG	25 bar	A900-V005



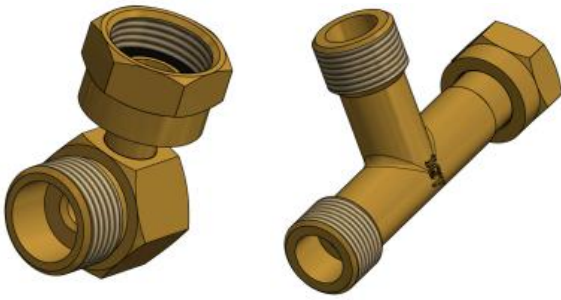
IGT DK

A	B	Gas type	Working Pressure	Item No.
G4-W21,8	G4-W21,8	LPG	25 bar	A900-V006
M20x1,5	M20x1,5	LPG	25 bar	A900-V007



IGT DK

- Wall Bracket Item No. A900-V999



IGT DK

A	B	Gas type	Working Pressure	Item No.
Angle outlet M20x1,5	M20x1,5	LPG	1.5-4 bar	A900-296
M20x1,5 MaleFold	M20x1,5	LPG	1.5-4 bar	A900-265



For adding heating device to changeover

IGT DK

A	B	Gas type	Working Pressure	Item No.
Brass fitting M20x1,5	M20x1,5 Male	LPG	0-16 bar	A900-331



IGT DK

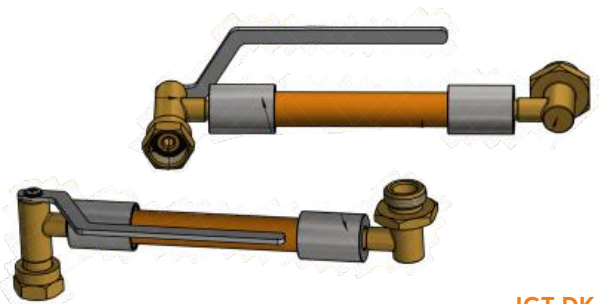
A	B	Gas type	Working Pressure	Item No.
M20x1,5	M20x1,5	LPG		A900-341



IGT DK

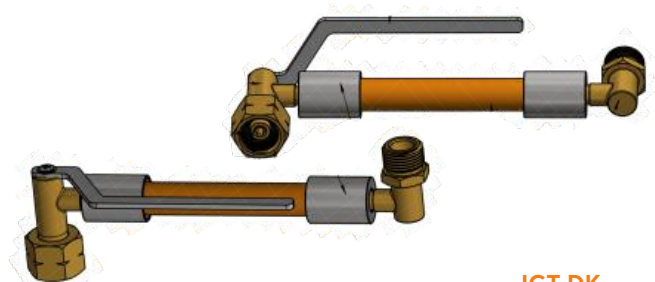
A	B	Gas type	Working Pressure	Item No.
T-Fitting G2 R5	M20x1,5	LPG		A900-354
G12 Nut	G12 Male 90°	LPG		A900-344
M20 Gasket		LPG		A900-996

- Manual change over Pigtails designed for A900-V006 and A900-V007. Twist and tension free. Length 300mm or 400mm



IGT DK

Hose dims.	Hose dims.	Type	Item No.
M20x1,5	G2-W21,8 Male	LPG	S006-HP301

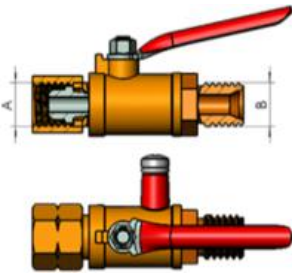


IGT DK

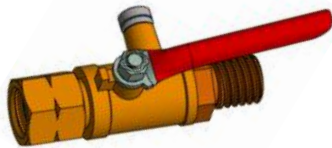
Hose dims.	Hose dims.	Type	Item No.
G4 W21,8	G4-W21,8 Male	LPG	S006-HP300

- Other inlet/outlet connections can be supplied.

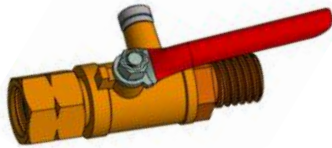
BALL VALVE WITH M5 TEST POINT



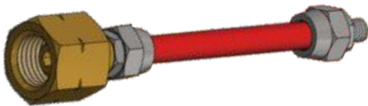
A	B	Working pressure	Gas type	Test point connection	Material	Factory Item No.	IGT DK Item No.
G 1/4" nut	G 1/4" female	20 bar	LPG	NO	Brass	QJCP000078	A900-V001
G 1/4" nut	G 1/4" female	20 bar	LPG	YES	Brass	QJCP000078	A900-V002



A	B	Working pressure	Gas type	Test point connection	Material	Factory Item No.	IGT DK Item No.
G 3/8" nut	G 3/8" female	20 bar	LPG	YES	Brass	QJCP000079	A900-V003

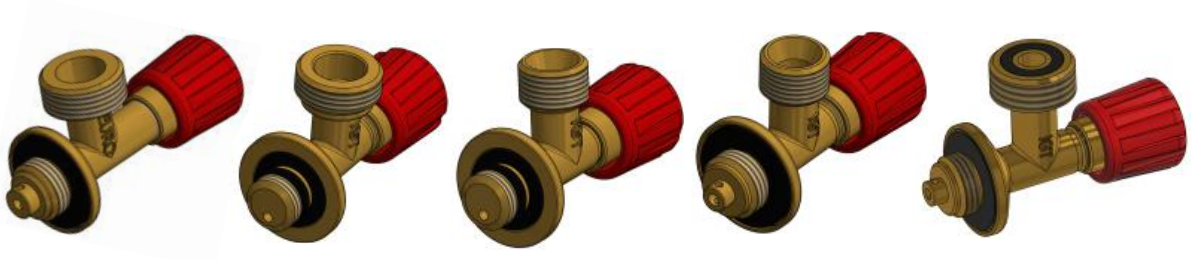


A	B	Working pressure	Gas type	Test point connection	Material	Factory Item No.	IGT DK Item No.
5/8" UNF nut	5/8" UNF female	20 bar	LPG	YES	Brass		A900-V008

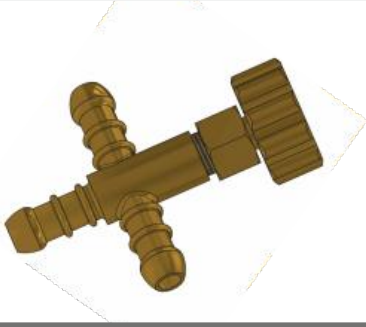


Connections: each side x Length	Test point	Main Material	Factory Item No.	IGT DK Item No.
Test hose for M5 Ball valve	G1/4"-M5	Rubber*brass		A900-999

- The test point ball valve is used just after the LP regulator in Caravan, Boat and Leisure house installations. The test point is used to conduct the EN1949-150mbar gas leak test. Mandatory for EU markets.
- Ask for our test hose and test pump solutions.



Description	Material	Working Pressure	Factory	IGT DK
			Item No.	Item No.
M16x1,5 inlet - W21,8 outlet angled 90 degree	Brass	20 bar		A900-104
M14x1,5 inlet - W21,8 outlet angled 90 degree	Brass	20 bar		A900-085
M14x1,5 inlet - G3/8"- LH outlet angled 90 degree	Brass	20 bar		A900-086
M16x1,5 inlet - G3/8"- LH outlet angled 90 degree	Brass	20 bar		A900-079
M16x1,5 inlet - G12 angled 90 degree	Brass	20 bar		A900-317



Description	Material	Working Pressure	Factory	IGT DK
			Item No.	Item No.
8 mm nozzle 3 way	Brass	0.5 bar		A900-V254



Description	Material	Working Pressure	Factory	IGT DK
			Item No.	Item No.
M14x1,5- G3/8" LH	Brass	20 bar		A900-V256

- Needle valves are used to adjust gas flows without reducing the gas pressure. (pressure drop over valve and pipe must be considered)

VALVE (NEEDLE VALVE)

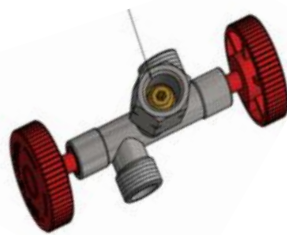
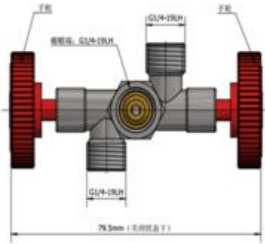
NV



Description	Material	Working Pressure	Factory	IGT DK
			Item No.	Item No.
90° Needle valve G1/4LH female to G1/4 LH male	Brass	4 bar	QJCP000212	A900-179



Description	Material	Working Pressure	IGT DK
			Item No.
Needle valve Triple G1/4" LH	Brass	16 bar	A900-332
Needle valve Triple G3/8" LH	Brass	16 bar	A900-336



Description	Material	Working Pressure	Factory	IGT DK
			Item No.	Item No.
Double outlet valve G1/4" LH	zinc	4 bar	QJCP000211	A900-178



Description	Material	Working Pressure	IGT DK
			Item No.
Needle valve with 1/4" NPT Female to 1/4"NPT male	Brass	20 bar	A900-V253



Description	Material	Working Pressure	Factory	IGT DK
			Item No.	Item No.
Needle with H50 both ends	Brass	20 bar	Y100LJ0034	A900-V250

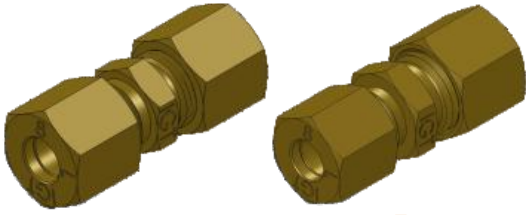


Description	Material	Working Pressure	IGT DK
			Item No.
Needle valve with 1/4" NPT Female both ends	Brass	20 bar	A900-V252

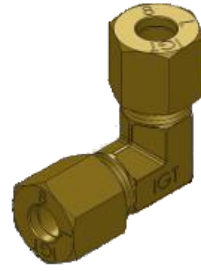


Description	Material	Working Pressure	Factory	IGT DK
			Item No.	Item No.
Needle valve with 1/8" NPT female both ends Brass	Brass	20 bar	Y100LJ0036	A900-V251

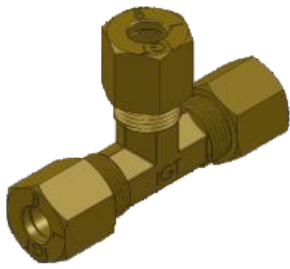
QUICK ACTING VALVES & COMPRESSION FITTINGS



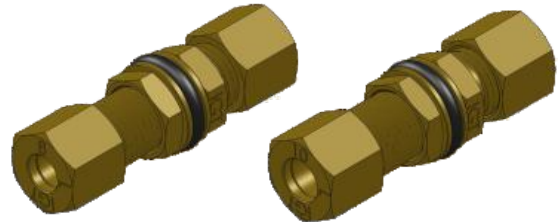
Description	Material	Factory	IGT DK
		Item No.	Item No.
Union 8 mm compression fitting	Brass	QJCP000141	A900-145
Union 8-10 mm compression fitting	Brass		A900-249
Union 10 mm compression fitting	Brass		A900-030
Union G3/8" compression fitting	Brass	QJCP000145	A900-149



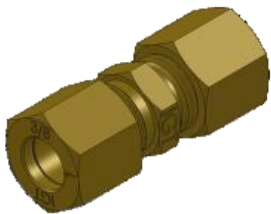
Description	Material	Factory	IGT DK
		Item No.	Item No.
Angle 90 degree compression fitting 8-8 mm	Brass	QJCP000142	A900-146
Angle 90 degree compression fitting 10-10 mm	Brass		A900-032
Angle 90 degree compression fitting 3-8"-3/8"	Brass	QJCP000147	A900-151



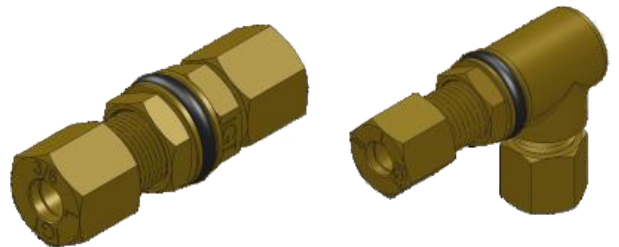
Description	Material	Factory	IGT DK
		Item No.	Item No.
T-Compression fitting 8 mm	Brass	QJCP000143	A900-147
T-Compression fitting 10 mm	Brass		A900-031
T-Union G3/8" compression fitting	Brass	QJCP000146	A900-150



Description	Material	Factory	IGT DK
		Item No.	Item No.
Compression fitting 8mm straight Bulkhead EN8434	Brass	QJCP000209	A900-220
Compression fitting 10mm straight Bulkhead EN8434	Brass		A900-242
Compression fitting 3/8" straight Bulkhead EN8434	Brass		A900-221

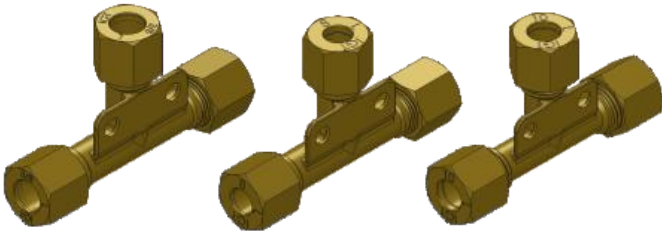


Description	Material	Factory	IGT DK
		Item No.	Item No.
R3/8" ISO7/1- 8 mm compression fitting	Brass	QJCP000144	A900-148

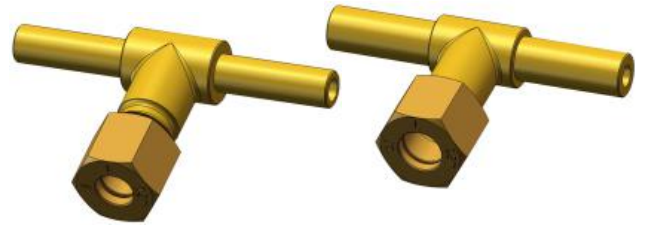


Description	Material	Factory	IGT DK
		Item No.	Item No.
Compression fitting 3/8" straight bulkhead EN8434	Brass	QJCP000210	A900-221
Compression fitting 8 mm angled 90 degree Bulkhead	Brass		A900-169

QUICK ACTING VALVES & COMPRESSION FITTINGS



Description	Material	Factory	IGT DK
		Item No.	Item No.
Compression fitting 8 mm angled 90 degree T unit	Brass		A900-304
Compression fitting 10 mm angled 90 degree T unit	Brass		A900-306
Compression fitting 3/8" angled 90 degree T unit	Brass		A900-302



Description	Material	Factory	IGT DK
		Item No.	Item No.
Compression fitting 8mm to 2x8mm tube	Brass		A900-350
Compression fitting 10mm to 2x8mm tube	Brass		A900-351

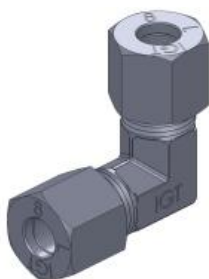
QUICK ACTING VALVES & COMPRESSION FITTINGS



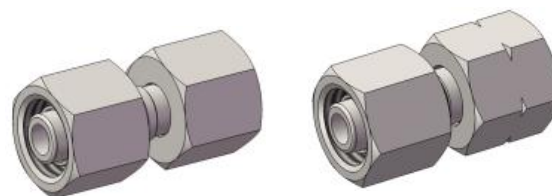
Description	Material	Factory	IGT DK
		Item No.	Item No.
Compression fitting 8mm Steel Union	Steel		A900-280
Compression fitting 8-10mm Steel Union	Steel		A900-281
Compression fitting 10mm Steel Union	Steel		A900-285



Description	Material	Factory	IGT DK
		Item No.	Item No.
T - Compression fitting 8mm Steel Union	Steel		A900-282
T - Compression fitting 8-10mm Steel Union	Steel		A900-286
T - Compression fitting 10mm Steel Union	Steel		A900-287



Description	Material	Factory	IGT DK
		Item No.	Item No.
90° Compression fitting 8mm Steel Union	Steel		A900-283
90° Compression fitting 8-10mm Steel Union	Steel		A900-284
90° Compression fitting 10mm Steel Union	Steel		A900-288

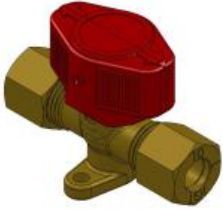


Description	Material	Factory	IGT DK
		Item No.	Item No.
Compression fitting 8mm both ends	Steel		A900-348
Compression fitting 8mm to G1/4" LH	Steel		A900-349

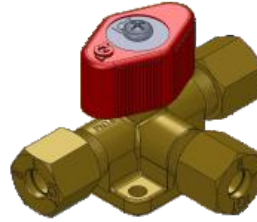


Description	Material	Factory	IGT DK
		Item No.	Item No.
Compression fitting 8mm straight bulkhead EN8434	Steel		A900-305
Compression fitting 3/8" straight bulkhead EN8434	Steel		A900-303
Compression fitting 10mm straight bulkhead EN8434	Steel		A900-308

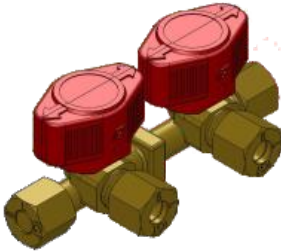
QUICK ACTING VALVES & COMPRESSION FITTINGS



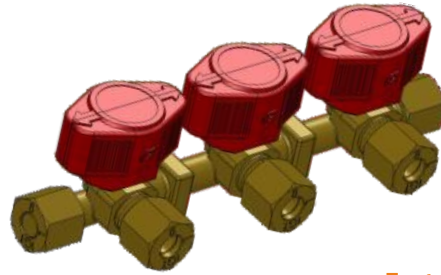
Description	Material	Factory	IGT DK
		Item No.	Item No.
Quick Acting Block valve (double o-ring sealing) with wall bracket-8 mm compression fitting	Brass	QJCP000148	A900-152-B
Quick Acting Block valve (double o-ring sealing) with wall bracket-3/8" compression fitting	Brass	QJCP000150	A900-230-B
Quick Acting Block valve (double o-ring sealing) with wall bracket-10 mm compression fitting	Brass		A900-065-B



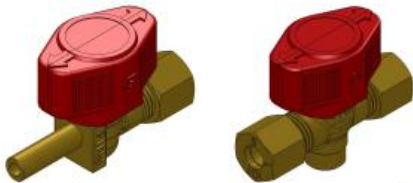
Description	Material	Factory	IGT DK
		Item No.	Item No.
10mm T- Quick acting gas valve with wall bracket	Brass	QJCP000176	A900-173
8mm T- Quick acting gas valve with wall bracket	Brass	QJCP000176	A900-154
3/8" T- Quick acting gas valve with wall bracket	Brass	QJCP000177	A900-174



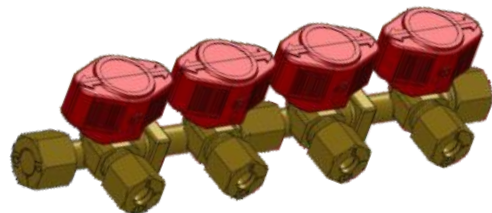
Description	Material	Factory	IGT DK
		Item No.	Item No.
Double Quick Acting Block valve (double o-ring sealing) with wall bracket-8mm compression fitting	Brass	QJCP000149	A900-153-B
Double Quick Acting Block valve (double o-ring sealing) with wall bracket- 10 mm compression fitting in 8mm out	Brass	QJCP000149	A900-250-B
Double Quick Acting Block valve (double o-ring sealing) 3/8" compression fitting	Brass	QJCP000151	A900-231-B
Double Quick Acting Block valve (double o-ring sealing) 10mm compression fitting	Brass		A900-066-B



Description	Material	Factory	IGT DK
		Item No.	Item No.
Triple Quick Acting Block valve (double o-ring sealing) 8mm compression fitting	Brass	QJCP000152	A900-155-B
Triple Quick Acting Block valve (double o-ring sealing) 3/8"compression fitting	Brass	QJCP000153	A900-232-B
Triple Quick Acting Block valve (double o-ring sealing) 10mm compression fitting in -8mm out	Brass	QJCP000152	A900-251-B



Description	Material	Factory	IGT DK
		Item No.	Item No.
Quick active valve 8mm In - 8mm tube	Brass		A900-338
Quick active valve 8mm In - 8mm out	Brass		A900-362



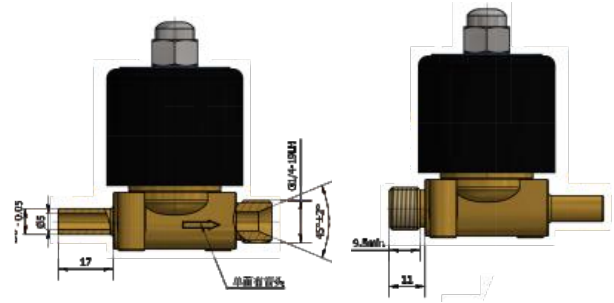
Description	Material	IGT DK	
		Item No.	Item No.
Quick acting gas valve (double o-ring sealing) 8mm in - out	Brass	A900-252-B	
Quick acting gas valve (double o-ring sealing) 10mm in - 8mm out	Brass	A900-253-B	
Quick acting gas valve (double o-ring sealing) 3/8" in - 3/8" out	Brass	A900-072-B	
Quick acting gas valve (double o-ring sealing) 10mm in - 10mm out	Brass	A900-312-B	

- Wall Bracket solutions as an optional feature.
- Quick Acting Valves are used for Caravan, Boat and Leisure homes and professional cooking vehicles.

QUICK ACTING VALVES COMPRESSIONA



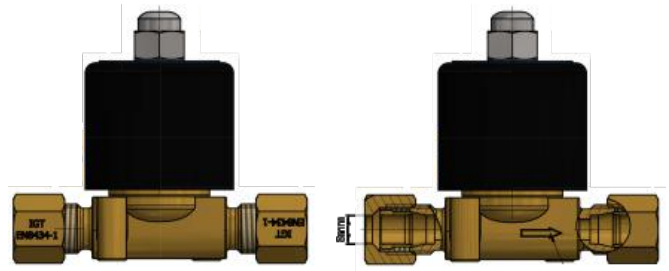
Description	Material	Factory	IGT DK
		Item No.	Item No.
Leak spray	Brass		H900-001



Description	Material	Factory	IGT DK
		Item No.	Item No.
In male G1/4" - LH - Out 8mm tube	Brass		H900-004



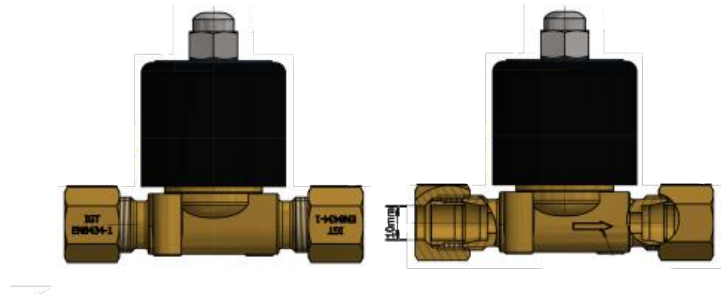
Description	Material	Factory	IGT DK
		Item No.	Item No.
Solenoid Valve G1/2"	Brass		H900-002



Description	Material	Factory	IGT DK
		Item No.	Item No.
In/Out 8mm compression fitting	Brass		H900-005

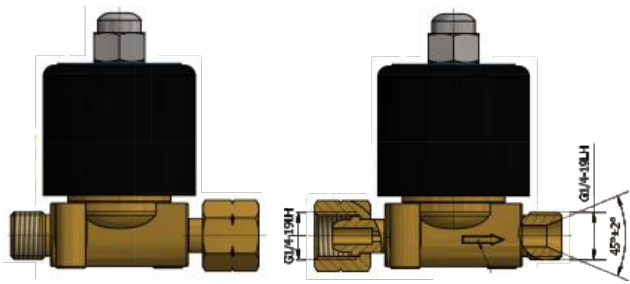


Description	Material	Factory	IGT DK
		Item No.	Item No.
Explosion proof solenoid valve G1/2"	Brass		H900-003

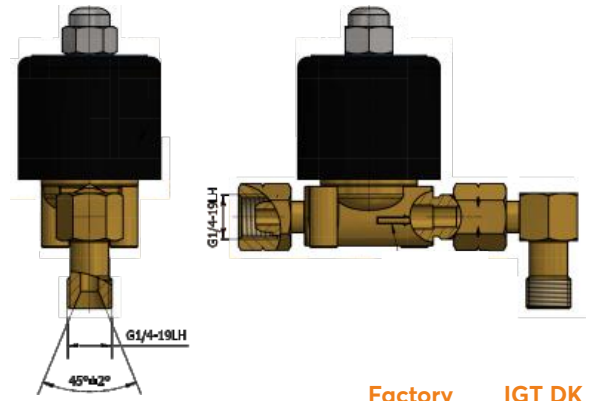


Description	Material	Factory	IGT DK
		Item No.	Item No.
In/Out 10mm compression fitting	Brass		H900-006

QUICK ACTING VALVES COMPRESSIONA



Description	Material	Factory	IGT DK
		Item No.	Item No.
In G1/4" LH Nut Out 1/4" LH male	Brass		H900-007

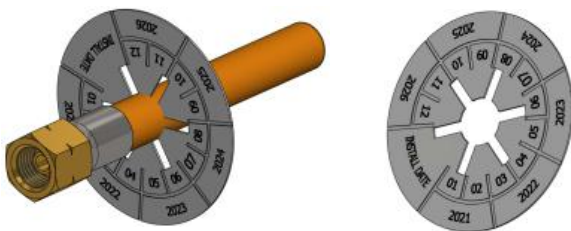


Description	Material	Factory	IGT DK
		Item No.	Item No.
In G1/4" LH Nut Out 90° 1/4" LH male rotating	Brass		H900-008

PVC HOSE - LOW PRESSURE ASSEMBLY (CLASS 2)

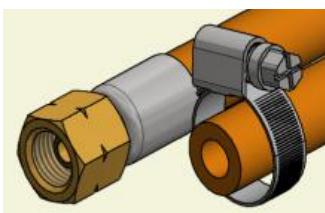
- To connect fittings, consuming appliances and piping
- Cold-resistant to -30°C
- Various hose standards can be offered. For EU EN16436-1 and EN16436-2 are predominantly used. Class 2, for reduced pressure and class 3 for unreduced pressure for class 3-IGT apply heavy sleeves with improved life time and durability with 300 NM pull force resistance.
- Use the A900-008, Install date label to monitor the end of use date.
- PVC hose is price competitive but has short durability of less than 5 years. Recommended exchanged after 3 years or when ever it is due.
- Each IGT Hose assembly is tested 100% gas tight by compressed air at 20bar. Rubber hose is recommended due to the longer durability, and fire resistance. It can last upto 10 years. Recommended exchanged after 5 years of use or when ever it is due.
- When Brass-Brass connections are used gas tight connections can be obtained at <3NM force. Connections of Zinc - Steel - Brass needs 12-18NM and are therefore not recommended.

All Hose assemblies can be supplied with steel/ stainless steel



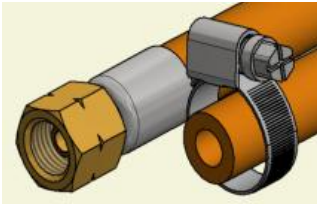
Hose label Year / Month

Item No.	A900-008
----------	----------



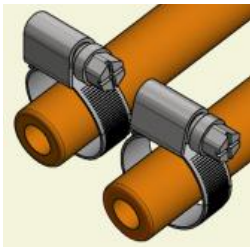
Connections: each side x Length	Main Material	Hose dims	Notes	Factory Item No.	IGT DK Item No.
G1/4"-LH nut x clamp x 550m	PVC*brass	8x3.5 mm	EN16436	SBPR.080.1.055.01	S008-056

PVC HOSE - LOW PRESSURE ASSEMBLY (CLASS 2)

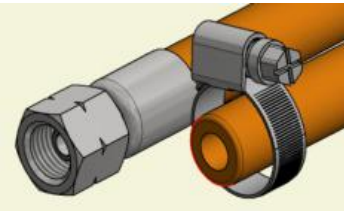


- To connect fittings, consuming appliances and piping
- Cold-resistant to -30°C
- CLASS 2 EN16436

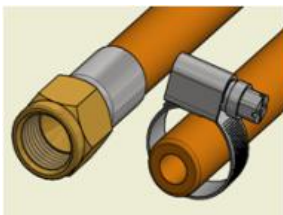
Connections: each side x Length	Main Material	Hose dims	Notes	Factory	IGT DK
				Item No.	Item No.
G1/4"-LH nut x 900mm	Rubber*steel, white zinc plating	8 x 3.5 mm	EN16436	SERO.080.1.090.01	S006-090



Connections: each side x Length	Main Material	Hose dims	Notes	Factory	IGT DK
				Item No.	Item No.
Clamp on each end x 600mm	Rubber/Steel	8 x 3.5 mm	EN16436	SERO.080.0.060.02	S006-063
Clamp on each end x 1000mm	Rubber/Steel	10x 3.5 mm	EN16436	SERO.100.0.100.02	S006-100

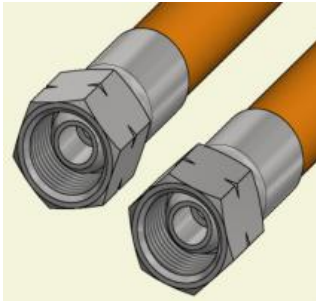


Connections: each side x Length	Main Material	Hose dims	Notes	Factory	IGT DK
				Item No.	Item No.
G1/4"-LH nut x clamp x 1500mm	PVC*steel, white zinc plating	8x3.5 mm	EN16436	SBPR.080.1.150.07	S008-155

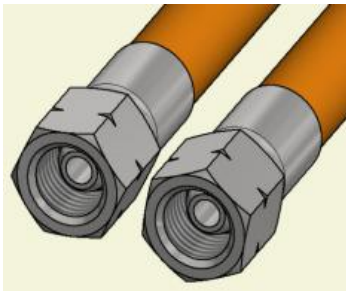


Connections: each side x Length	Main Material	Hose dims	Notes	Factory	IGT DK
				Item No.	Item No.
5/8"-18 UNF nut x clamp x 800mm	Rubber*brass	6.3 x 3.5 mm	EN16436	SERO.080.1.080.01	S006-085
5/8"-18 UNF nut x clamp x 600mm	Rubber*brass	6.3 x 3.5 mm	EN16436	SERO.080.1.080.02	S006-065
5/8"-18 UNF x 1/4"LH x 800mm	Rubber*brass	6.3 x 3.5 mm	EN16436	SERO.080.1.080.02	S006-083
5/8"-18 UNF x 1/4"LH x 2500mm	Rubber*brass	6.3 x 3.5 mm	EN16436	SERO.080.1.080.02	S006-251

PVC HOSE - LOW PRESSURE ASSEMBLY (CLASS 2)

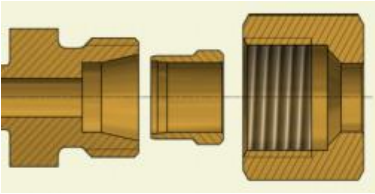


Connections: each side x Length	Main Material	Hose dims	Notes	Factory	IGT DK
				Item No.	Item No.
G3/8"-LH nut x G3/8"-LH nut x 2000 mm	Rubber*steel, white zinc plating	6.3 x 3.5 mm	EN16436	SERO.063.2.200.05	S006-212
G3/8"-LH nut x G3/8"-LH nut x 2000 mm	Rubber*steel, white zinc plating	6.3 x 3.5 mm	EN16436	SERO.063.2.200.06	S006-213
G3/8"-LH nut x G3/8"-LH nut x 3000 mm	Rubber*steel, white zinc plating	6.3 x 3.5 mm	EN16436	SERO.063.2.300.01	S006-310



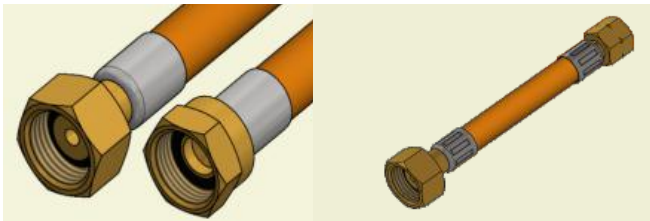
Connections: each side x Length	Main Material	Hose dims	Notes	Factory	IGT DK
				Item No.	Item No.
G1/4"-LH nut x G1/4"-LH nut x 1500mm	PVC*steel, white zinc plating	6.3 x 3.5 mm	EN16436	SBPR.063.2.150.11	S006-150
G1/4"-LH nut x G1/4"-LH nut x 2000mm	PVC*steel, white zinc plating	8 x 3.5 mm	EN16436	SBPR.080.2.200.04	S008-200
G1/4"-LH nut x G1/4"-LH nut x 400 mm	PVC*steel, white zinc plating	6.3 x 3.5 mm	EN16436	SBPR.063.2.040.01	S006-040
G1/4"-LH nut x G1/4"-LH nut x 600 mm	PVC*steel, white zinc plating	6.3 x 3.5 mm	EN16436	SBPR.063.2.060.01	S006-510
G1/4"-LH nut x G1/4"-LH nut x 700 mm	PVC*Brass	6.3 x 3.5 mm	EN16436	SBPR.063.2.080.01	S006-081
G1/4"-LH nut x G1/4"-LH nut x 800 mm	PVC*Brass	6.3 x 3.5 mm	EN16436	SBPR.080.1.100.07	S006-094
G1/4"-LH nut x G1/4"-LH nut x 2000mm	PVC*Steel	6.3 x 3.5 mm	EN16436	SBPR.063.2.150.02	S006-202
G1/4"-LH nut x G1/4"-LH nut x 1500 mm	PVC*Brass	6.3 x 3.5 mm	EN16436	SBPR.063.2.060.01	S006-095
G1/4"-LH nut x G1/4"-LH nut x 1200 mm	PVC*Brass	6.3 x 3.5 mm	EN16436	SBPR.063.2.080.01	S006-120
G1/4"-LH nut x G1/4"-LH nut x 3000 mm	PVC* Brass	6.3 x 3.5 mm	EN16436	SBPR.080.1.100.07	S006-306
G1/4"-LH nut x G1/4"-LH nut x 5000mm	PVC* Brass	6.3 x 3.5 mm	EN16436	SBPR.063.2.150.02	S006-306

RUBBER HOSE - LOW PRESSURE ASSEMBLY (CLASS 2)



Compression fitting to EN8434

Connections: each side x Length	Main Material	Hose dims	Notes	Factory	IGT DK
				Item No.	Item No.



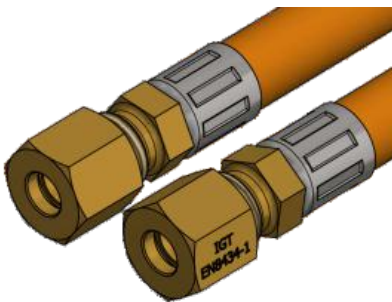
Connections: each side x Length	Main Material	Hose dims	Notes	Factory	IGT DK
				Item No.	Item No.
G1/2-RH nut x M20*1.5 nut x 1500mm	PVC*brass	8x3.5 mm	EN16436	SBPR.080.2.150.15	S008-154
G1/2RH - G1/4" LH x 1500mm	PVC*brass	8x3.5 mm	EN16436	SBPR.080.2.150.15	S006-509



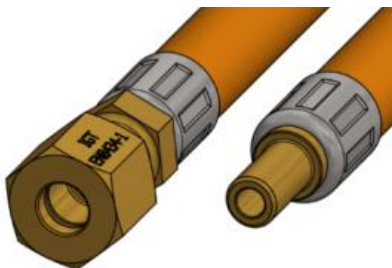
Connections: each side x Length	Main Material	Hose dims	Notes	Factory	IGT DK
				Item No.	Item No.
G 1/4 LH nut x compression fitting 8 x 450mm	Rubber/Brass	6.3x3.5 mm	EN16436	SERO.063.2.040.06	S006-C001
G 1/4 LH nut x compression fitting 10 x 400mm	Rubber/Brass	6.3x3.5 mm	EN16436	SERO.063.2.040.07	S006-C002
G 1/4 LH nut x compression fitting 8 x 600mm	Rubber/Brass	6.3x3.5 mm	EN16436		S006-C003
G 1/4 LH nut x compression fitting 10 x 1200mm	Rubber/Brass	6.3x3.5 mm	EN16436		S006-C006
G 1/4 LH nut x compression fitting 10 x 800mm	Rubber/Brass	6.3x3.5 mm	EN16436		S006-C007

RUBBER HOSE - LOW PRESSURE ASSEMBLY (CLASS 2)

Connections: each side x Length	Main Material	Hose dims	Notes	Factory	IGT DK
				Item No.	Item No.
Compression fitting 3/8" - 1/4"LH 400mm	Rubber/Brass	6.3 x 3.5mm	En16436		S006-C010
Compression fitting 8mm - 1/4"LH 210mm	Rubber/Steel	6.3 x 3.5mm	EN16436		S006-C011
Compression fitting 8mm - 1/4"LH 400mm	PVC/Steel	6.3 x 3.5mm	EN16436		S006-C021
Compression fitting 8mm - 1/4"LH 1000mm	PVC/Steel	6.3 x 3.5mm	EN16436		S006-C022
Compression fitting 8mm - 1/4"LH 2000mm	PVC/Steel	6.3 x 3.5mm	EN16436		S006-C023
Compression fitting 8mm - 1/4"LH 3000mm	PVC/Steel	6.3 x 3.5mm	EN16436		S006-C024
Compression fitting 8mm - 1/4"LH 400mm	PVC/Steel	6.3 x 3.5mm	EN16436		S006-C025
Compression fitting 10mm - 1/4"LH 400mm	PVC/Steel	6.3 x 3.5mm	EN16436		S006-C026

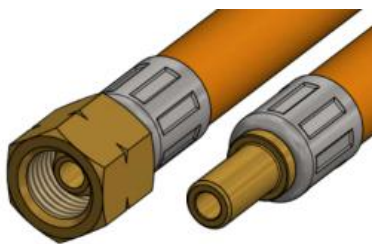


Connections: each side x Length	Main Material	Hose dims	Notes	Factory	IGT DK
				Item No.	Item No.
compression fitting 8 x 8 MM tube x 300mm	Rubber/Brass	6.3x3.5 mm	EN16436		S006-C008
compression fitting 8 x 8 MM tube x 450mm	Rubber/Brass	6.3x3.5 mm	EN16436		S006-C004
compression fitting 8 x 8 MM tube x 600mm	Rubber/Brass	6.3x3.5 mm	EN16436		S006-C005

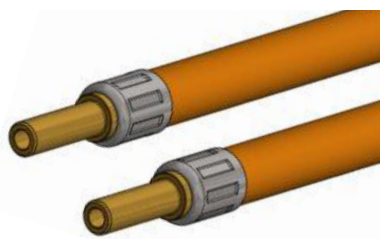


Connections: each side x Length	Main Material	Hose dims	Notes	Factory	IGT DK
				Item No.	Item No.
compression fitting 8 x 8 MM tube x 400mm	Rubber/Brass	6.3x3.5 mm	EN16436		S006-C105
compression fitting 8 mm x 8 mm tube 8 x 1200mm	Rubber/Brass	6.3x3.5 mm	EN16436		S006-C103

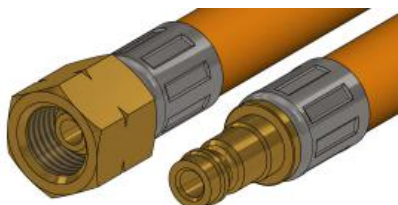
RUBBER HOSE - LOW PRESSURE ASSEMBLY (CLASS 2)



Connections: each side x Length	Main Material	Hose dims	Notes	Factory	IGT DK
				Item No.	Item No.
G 1/4 LH nut x 8 mm tube x 400mm	Rubber/Brass	6.3x3.5 mm	EN16436		S006-C104
G 1/4 LH nut x 8 mm tube x 600mm	Rubber/Brass	6.3x3.5 mm	EN16436		S006-C101
G 1/4 LH nut x 8 mm tube x 800mm	Rubber/Brass	6.3x3.5 mm	EN16436		S006-C107
G 1/4 LH nut x 8 mm tube x 1200mm	Rubber/Brass	6.3x3.5 mm	EN16436		S006-C102
G 1/4" x 10 mm tube x 400mm	Rubber/Brass	6.3x3.5 mm	EN16436		S006-C106
					S006-C108

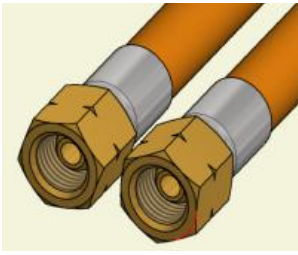


Connections: each side x Length	Main Material	Hose dims	Notes	Factory	IGT DK
				Item No.	Item No.
8 mm tube x 8 mm tube x 400mm	Rubber/Brass	6.3x3.5 mm	EN16436		S006-C123
8 mm tube x 8 mm tube x 800mm	Rubber/Brass	6.3x3.5 mm	EN16436		S006-C120
8 mm tube x 8 mm tube x 1500mm	Rubber/Brass	6.3x3.5 mm	EN16436		S006-C121
8 mm tube x 8 mm tube x 1000mm	Rubber/Brass	6.3x3.5 mm	EN16436		S006-C122



Connections: each side x Length	Main Material	Hose dims	Notes	Factory	IGT DK
				Item No.	Item No.
Quick coupling male - 1/4 LH	PVC/Steel	6.3x3.5 mm	EN16436		S006-C012

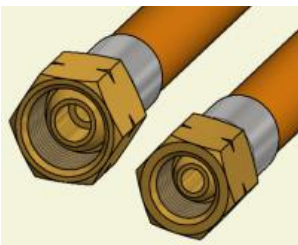
RUBBER HOSE - LOW PRESSURE ASSEMBLY (CLASS 2)



Connections: each side x Length	Main Material	Hose dims	Notes	Factory	IGT DK
				Item No.	Item No.
G1/4"-LH nut x G1/4"-LH nut x500 mm	Rubber*brass	6.3 x 3.5 mm	EN 16436 Phthalate Reach	SERO.063.2.050.01	S006-053
G1/4"-LH nut x G1/4"-LH nut x600 mm	Rubber*brass	6.3 x 3.5 mm	EN 16436 Phthalate Reach	SERO.063.2.050.03	S006-062
G1/4"-LH nut x G1/4"-LH nut x700 mm	Rubber*brass	6.3 x 3.5 mm	EN 16436 Phthalate Reach	SERO.063.2.080.06	S006-511
G1/4"-LH nut x G1/4"-LH nut x800 mm	Rubber*brass	6.3 x 3.5 mm	EN 16436 Phthalate Reach	SERO.063.2.080.06	S006-082
G1/4"-LH nut x G1/4"-LH nut x1000 mm	Rubber*brass	6.3 x 3.5 mm	EN 16436 Phthalate Reach	SERO.063.2.080.06	S006-109
G1/4"-LH nut x G1/4"-LH nut x1500 mm	Rubber*brass	6.3 x 3.5 mm	EN 16436 Phthalate Reach	SERO.063.2.080.06	S006-153



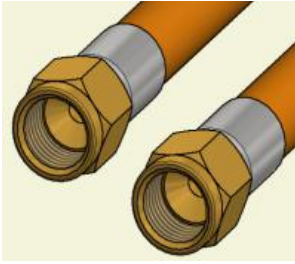
Connections: each side x Length	Main Material	Hose dims	Notes	Factory	IGT DK
				Item No.	Item No.
G1/4"-LH nut -90 degree x G1/4"-LH nut x500 mm	Rubber*brass	6.3 x 3.5 mm	EN 16436 Phthalate Reach		S006-054
G1/4"-LH nut - 90 degree x G1/4"-LH nut x800 mm	Rubber*brass	6.3 x 3.5 mm	EN 16436 Phthalate Reach		S006-084



Connections: each side x Length	Main Material	Hose dims	Notes	Factory	IGT DK
				Item No.	Item No.
G3/8"-LH nut xG1/4"-LH nut x1200mm	Rubber*brass	6.3 x 3.5 mm	EN16436	SERO.063.2.120.06	S006-122

- To connect fittings, consuming appliances and piping
- Cold-resistant to -30°C

RUBBER HOSE - LOW PRESSURE ASSEMBLY (CLASS 2)



Connections: each side x Length	Main Material	Hose dims	Notes	Factory	IGT DK
				Item No.	Item No.
5/8" UNF nut x 5/8"UNF nut x 450mm	PVC*brass	8x3.5 mm	EN16436	SBPR.080.2.045.01	S008-045
5/8" UNF nut x 5/8"UNF nut x 460mm	Rubber/Brass	6.3x3.5 mm	EN16436	SERO.080.2.046.01	S006-046

● FRENCH HOSE ASSEMBLIES

Other length than below stated are not allowed.



Connections: each side x Length	Main Material	Hose dims	Notes	Factory	IGT DK
				Item No.	Item No.
M20x1,5 RH X G1/2" RH x 500mm	PVC	8 X 3.5	NF36110		S036 112 050
M20x1,5 RH X G1/2" RH x 750mm	PVC	8 X 3.5	NF36110		S036 112 075
M20x1,5 RH X G1/2" RH x 1000mm	PVC	8 X 3.5	NF36110		S036 112 100
M20x1,5 RH X G1/2" RH x 1250mm	PVC	8 X 3.5	NF36110		S036 112 125
M20x1,5 RH X G1/2" RH x 1500mm	PVC	8 X 3.5	NF36110		S036 112 150
M20x1,5 RH X G1/2" RH x 2000mm	PVC	8 X 3.5	NF36110		S036 112 200

HIGH PRESSURE ASSEMBLY (CLASS 3)

- To connect fittings, consuming appliances and piping
- Cold-resistant to -30°C
- Pull force to detach fitting >300 kg.

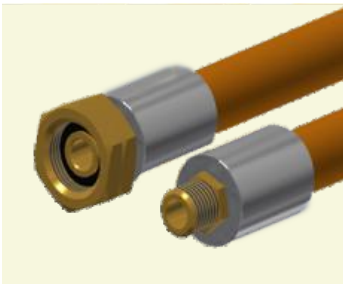


HEAVY SLEEVES

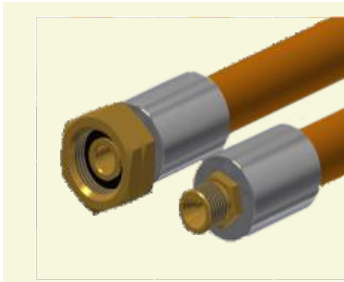
- 100 % factory gas leak tested at 20 bar.
- Leak tight -30°C- +50°C



Connections: each side x Length	Main Material	Hose dims	Notes	Factory	IGT DK
				Item No.	Item No.
G2 female to G2 female x 500mm	Rubber	8 x 5 mm	EN16436		S008-HP070
G2 female to G2 female x 1000mm	Rubber	8 x 5 mm	EN16436		S008-HP130



Connections: each side x Length	Main Material	Hose dims	Notes	Factory	IGT DK
				Item No.	Item No.
G2 female to 1/4"NPT - 1/4"NPT x 800mm	Rubber	8 x 5 mm	EN16436		S008-HP 080
G2 female to 1/4"NPT - M20x45 x 800mm	Rubber	8 x 5 mm	EN16436		S008-HP 081



Connections: each side x Length	Main Material	Hose dims	Notes	Factory	IGT DK
				Item No.	Item No.
G2 female to G1/4 LH male x 1000	Rubber	8 x 5 mm	EN16436		S008-HP 100

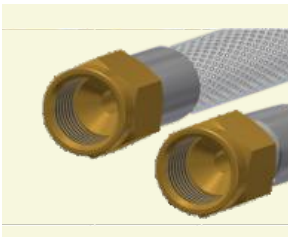
HIGH PRESSURE ASSEMBLY (CLASS 3)



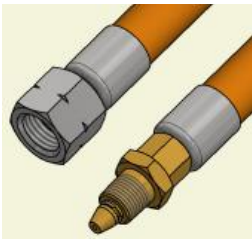
Connections: each side x Length	Main Material	Hose dims	Notes	Factory	IGT DK
				Item No.	Item No.
G2 female to POL x 1000mm	Rubber	8 x 5 mm	EN16436		S008-HP101



Connections: each side x Length	Main Material	Hose dims	Notes	Factory	IGT DK
				Item No.	Item No.
POL to POL x 1000mm	Rubber	8 x 5 mm	EN16436		S008-HP102
POL to POL x 400mm	Rubber	8 x 5 mm	EN16436		S008-HP103

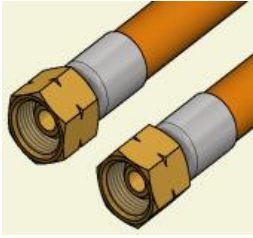


Connections: each side x Length	Main Material	Hose dims	Notes	Factory	IGT DK
				Item No.	Item No.
Stainless steel braided hose x 1000mm 5/8"UNF female to 5/8"UNF female		8 x 3.5 mm			S008-HPB100

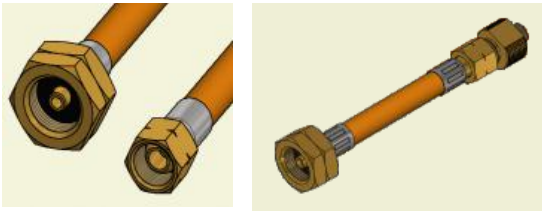


Connections: each side x Length	Main Material	Hose dims	Notes	Factory	IGT DK
				Item No.	Item No.
G3/8" -LH nut x 1/8"NPT x 800mm	Rubber*brass	6.3x5	EN16436		S006-085
G3/8" -LH nut x 1/8"NPT x 1200mm	Rubber*brass	6.3x5	EN16436		S006-123

HIGH PRESSURE ASSEMBLY (CLASS 3)



Connections: each side x Length	Main Material	Hose dims	Notes	Item No.	Item No.
G3/8"-LH nut x G3/8"-LH nut x 1000mm	Rubber*brass	6.3 x 3.5 mm	EN 16436	SERO.063.2.150.02	S006-108
G3/8"-LH nut x G3/8"-LH nut x 1500mm	Rubber*brass	8 x 3.5 mm	EN 16436	SERO.080.2.150.09	S006-154
G3/8"-LH nut x G3/8"-LH nut x 1500mm	Rubber*brass	8 x 3.5 mm	En16436, for Chile	SERO.080.2.150.09	S006-158
G3/8"-LH nut x G3/8"-LH nut x 2000mm	Rubber*brass	6.3 x 3.5 mm	EN 16436	SERO.063.2.080.04	S006-203
G3/8"-LH nut x G3/8"-LH nut x 3000mm	Rubber*brass	6.3x3.5 mm	EN16436	SBPR.063.2.150.07	S006-305
G3/8"-LH nut x G3/8"-LH nut x 5000mm	Rubber*brass	6.3x3.5 mm	EN16436	SBPR.063.2.200.03	S006-502
G3/8"-LH nut x G3/8"-LH nut x 10000mm	Rubber*brass	6.3x3.5 mm	EN16436	SBPR.063.2.200.01	S006-1000



Connections: each side x Length	Main Material	Hose dims	Notes	Factory Item No.	IGT DK Item No.
G3/8" LH nut x G5 LH nut x 5000 mm	Rubber*brass	6.3 x 3.5 mm	En16436 G5 = W21.8x1.814	SERO.063.2.500.05	S006-506
7/16" LH nut x G5 LH nut x 1200 mm	Rubber*brass	6.3 x 3.5 mm	En16436 G5 = W21.8x1.814	SERO.063.2.500.05	S006-600

PIGTAILS - HIGH PRESSURE ASSEMBLY (CLASS 3)

- Pigtails with built in excess flow valve, needle valve or ball valve.
- Any inlet and outlet combination, any length.
- Rubber hose made to EN16436 class 3, 30 bar- , optional steel braided.
- PVC hose made to UI144
- To connect fittings, consuming appliances and piping

Technical data:

- cold-resistant to -30°C
- Pull force to detach fitting >300 kg.
- 100 % factory gas leak tested at 20 bar.
- Leak tight -30°C- +50°C



Connections: each side x Length	Main connection material	Hose dims.	Hose dims.	Factory Item No.	IGT DK Item No.
G10-M20x1,5	Brass	ID 6,3 mm	450 mm		S006-HP-450-002



Connections: each side x Length	Main connection material	Hose dims.	Hose dims.	Factory Item No.	IGT DK Item No.
G5-M20x1,5	Brass	ID 6,3 mm	450 mm		S006-HP-450-003



Connections: each side x Length	Main connection material	Hose dims.	Hose dims.	Factory Item No.	IGT DK Item No.
G7-M20x1,5	Brass	ID 6,3 mm	450 mm		S006-HP-450-004

PIGTAILS - HIGH PRESSURE ASSEMBLY (CLASS 3)



Connections: each side x Length	Main connection material	Hose dims.	Hose dims.	Factory	IGT DK
				Item No.	Item No.
G8-M20x1,5	Brass	ID 6,3 mm	450 mm		S006-HP-450-001



Connections: each side x Length	Main connection material	Hose dims.	Hose dims.	Factory	IGT DK
				Item No.	Item No.
G2-M20x1,5	Brass	ID 6,3 mm	450 mm		S006-HP-450-005



Connections: each side x Length	Main connection material	Hose dims.	Hose dims.	Factory	IGT DK
				Item No.	Item No.
G2-M20x1,5	Brass	ID 6,3 mm	450 mm		S006-HP-450-006

PIGTAILS

- US hose assemblies with built in needle valve



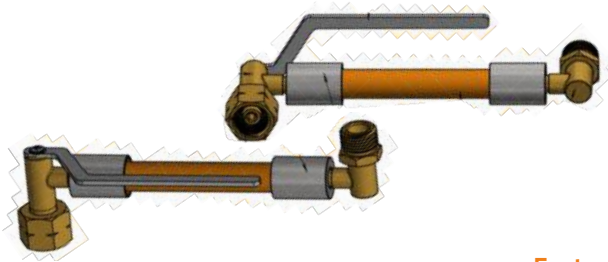
IGT DK

Description	Item No.
Connections each side: 1" ACME L = 5ft	S008 - US700
Connections each side: POL L = 5ft	S008 - US701

- Ad din Compact pigtail solution. C100 Pigtail



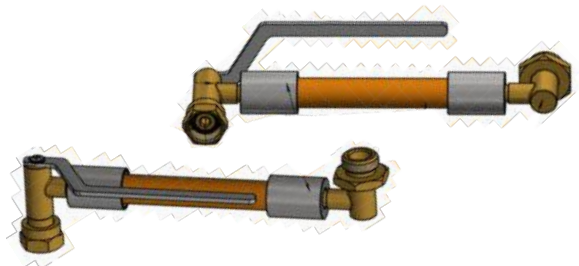
- Manual change over Pigtails designed for A900-V006 and A900-V007. Twist and tension free pigtails.



Factory

IGT DK

Hose dims.	Hose dims.	Type	Item No.	Item No.
G4 W21,8	G4-W21,8 Male	LPG		S006-HP300



Factory

IGT DK

Hose dims.	Hose dims.	Type	Item No.	Item No.
M20x1,5	G2-W21,8 Male	LPG		S006-HP301

PIGTAILS



Description	Type	Factory	IGT DK
		Item No.	Item No.
Rubber Hose Pigtail G2 - POL G10 Class 3 Heavy Sleeve	LPG		S008-HP101
			S008-HP050
			S008-HP052



Description	Type	Factory	IGT DK
		Item No.	Item No.
Rubber Hose Pigtail POL G10 - POL G10 Class 3 Heavy Sleeve	LPG		S008-HP102
			S008-HP051



A	B	Gas type	Factory	IGT DK
			Item No.	Item No.
G2 female	G2 female	LPG		S008-HP070

BRASS TUBE



- En1057 Seamless

Description	Outer diameter	Wall thickness	Length	Material	Factory	IGT DK
					Item No.	Item No.
Copper tube to EN	Ø8 mm	0,8 mm	25M	Copper		H900-100
Copper tube to EN	Ø10 mm	0,8 mm	25M	Copper		H900-101
Copper tube to EN	3/8"	0,8 mm	25M	Copper		H900-102

- Copper Tube Clip



IGT DK

Description	Item No.
8mm Copper pipe clips	V200-150
10mm Copper pipe clips	V200-151
12mm Copper pipe clips	V200-152

- Handle for small gas cylinder with M16 valves



IGT DK

Description	Item No.
Handle for small gas cylinder with M16 valves	A900-015



IGT DK

Description	Item No.
Stainless steel clamps for 8 mm hose	V200-001
Stainless steel clamps for 10mm hose	V200-003



IGT DK

Description	Item No.
Stainless steel hose clamps blue wing for 8 mm hose	V200-008

STEEL HOSE



IGT

Description	Length	Material		Product code
European Gas Hose According To EN 14800:2007	500mm	Hose : AISI 304L Stainless Steel	DN12	PF 14800 050
European Gas Hose According To EN 14800:2007	750mm	Braid : AISI 304 Stainless Steel Wire	DN12	PF 14800 075
European Gas Hose According To EN 14800:2007	1000mm	Sleeve : AISI 304 Stainless Steel	DN12	PF 14800 100
European Gas Hose According To EN 14800:2007	1250mm	Fittings : AISI303, Brass Nut Cover : PVC	DN12	PF 14800 125
European Gas Hose According To EN 14800:2007	1500mm	Gasket: Nitrile Rubber (EN 549 Standard)	DN12	PF 14800 150
European Gas Hose According To EN 14800:2007	2000mm	Max. Working Pressure : 0,5 bar	DN12	PF 14800 200



need high resolution image

IGT

Description	Length	Material		Product code
European Gas Hose According To EN 14800:2008	500mm	Hose : AISI 304L Stainless Steel	DN12	SPF 14800 050
European Gas Hose According To EN 14800:2008	750mm	Braid : AISI 304 Stainless Steel Wire	DN12	SPF 14800 075
European Gas Hose According To EN 14800:2008	1000mm	Sleeve : AISI 304 Stainless Steel	DN12	SPF 14800 100
European Gas Hose According To EN 14800:2008	1250mm	Fittings : AISI303, Brass Nut Cover : PVC	DN12	SPF 14800 125
European Gas Hose According To EN 14800:2008	1500mm	Gasket: Nitrile Rubber (EN 549 Standard)	DN12	SPF 14800 150
European Gas Hose According To EN 14800:2008	2000mm	Max. Working Pressure : 0,5 bar	DN12	SPF 14800 200

HOSE (CLASS 2)

- EN16436 Class 2 10 bar hose in PVC and Rubber
- To connect fittings, consuming appliances and piping

Technical data:

- cold-resistant to -30°C



Connections: each side x Length	Main Material	Hose dims	Notes	Factory	IGT DK
				Item No.	Item No.
100 meters	Rubber	6 x 3.5 mm	EN16436		S006-001
50 meters	Rubber	8 x 3.5 mm	EN16436	SERO.080.0.000.01	S008-000N
100M	PVC	8 x 3.5 mm	EN16V36	H00000E022	S008-005
1 meter	PVC	8 x 3.5 mm	EN16436	SBPR.080.0.061.02	S008-061
1 meter	Rubber	8 x 3.5 mm	EN16436	SERO.080.0.100.03	S008-100
100 meters	Rubber	10 x 5,0mm	EN16436	H00000E027	S010-000N

HOSE PVC REINFORCED BY STEEL WIRE

- Ø8 mm or Ø10 mm, wall thickness 6 mm +/-0,5 mm.
Working pressure 2 bar- Burst pressure 40 bar.



Description	Material	Coil length	Diameter	Factory	IGT DK
				Item No.	Item No.
LPG hose made to standard KGS1906, PVC	Steel Reinforced	50 meters	Ø8 mm		S008-K100
LPG hose made to standard KGS1906, PVC	Steel Reinforced	50 meters	Ø10 mm		S010-K100

Fitting packed in Blister are added - 001 to the Item No.

IGT Standard Blister Card and Blister Packaging



● A900ZK0001 65X115mm



● IGT Blister with larger part



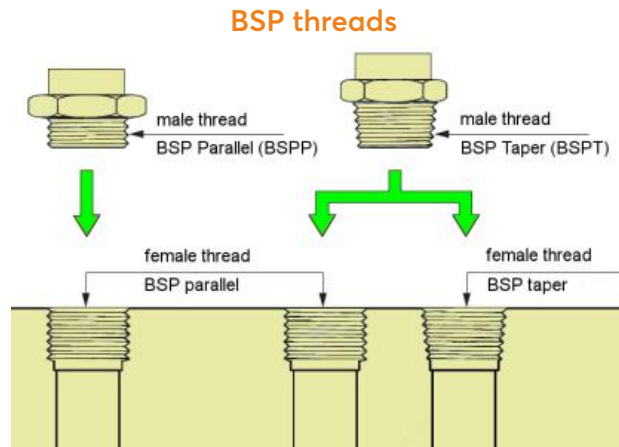
● Sample Blister with small part



● IGT Blister with small part

TYPES OF THREADS: BSP THREADS

IGT uses standard EN ISO 228-1 to produce threads of the standard catalogue brass fittings for threaded tubes and pipes. This type of thread is also known as BSP parallel thread (cylindrical) or "Gas" thread (G).



The **cylindrical thread** to ISO 228-1 is a type of Whitworth thread, a name derived from the inventor of it and whose origins date back to England in the mid-nineteenth century. Whitworth shape is based on a thread with a thread angle of 55 degrees, with rounded crests and roots. This type of thread became the most widely used for connecting threaded pipe and emerged as the de facto British Standard, which became known as standard threaded British pipe or BSP (for its acronym: British Standard Pipe), in two variants: conical (BSPT, t "tapered"), and in its parallel or cylindrical shape (BSP, the last p of "parallel").

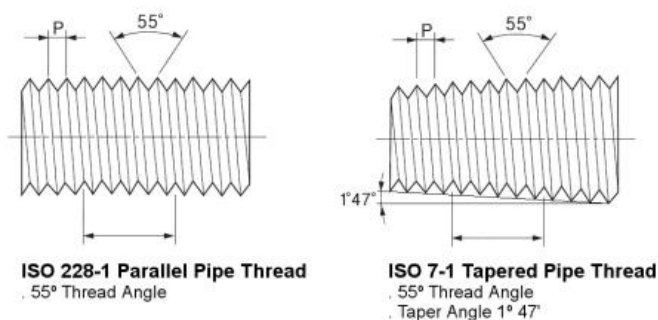
As mentioned, the **BSP threads** are threads with the profile "Gas" and can be of two types:

- **Parallel:** male and the female are mounted on the same cylindrical thread. Denomination according to ISO 228-1 is G.

Denomination example: 1/2" thread BSP parallel → **G 1/2**.

- **Tapered:** the conical male can be installed on a female thread conical or parallel. Denomination following ISO 7-1 (EN 10226-1) is R for external thread (male) and Rp and Rc for internal thread (female), with Rp if cylindrical and Rc when conical.

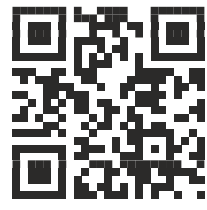
Denomination example: male thread 1/2" BSP tapered → **R 1/2**



IGT also manufacture conical threads on request, according to standard ISO 7-1 or others, such as the American standard NPT (National Pipe Thread), which also defines conical thread and we will talk some other time. Please contact us if it is your case and you need manufacture on request according to your specifications.

For more technical information you can ask us or refer directly to the rules:

- EN ISO 228-1: Pipe threads where pressure tight joints are not made on the threads. Part 1: Dimensions, tolerances and designation.
- EN 10226-1: Pipe threads where pressure tight joints are made on the threads. Part 1: Taper external threads and parallel internal threads. Dimensions, tolerances and designation.



WWW.IGT-LPG.COM



Integrated Gas
Technologies

Denmark

HEAD OFFICE IN DENMARK
INTEGRATED GAS TECHNOLOGIES
Gydevang 39-41 DK-3450 Allerød Denmark
Tel: 0045-4576 9921 | Fax: 0045-4576 9821
E: sales@igt-lpg.com | W: www.igt-lpg.com

FACTORY IN CHINA
NINGBO SHUAI XIAN REGULATOR CO. LTD
No 566, Jinshan Road, Zone C, Investment center
Jiangbei District, Ningbo Zhejiang, China
E: sales@igt-lpg.com | W: www.igt-lpg.com

FACTORY IN INDIA
INTEGRATED GAS CONTROLS TECHNOLOGIES PVT. LTD
Survey No.784, 14-59/3A,
Medchal Village, Near Ravalkole
"X" Road, Medchal Mandal
& Medchal - Malkajgiri District.
E: info@igt-lpg.in | W: www.igt-lpg.in

40+
MILLION
SAFE FAMILIES

120+
COUNTRIES

400+
PRODUCTS

25+
CERTIFICATES